

LOG  
BOOK  
5

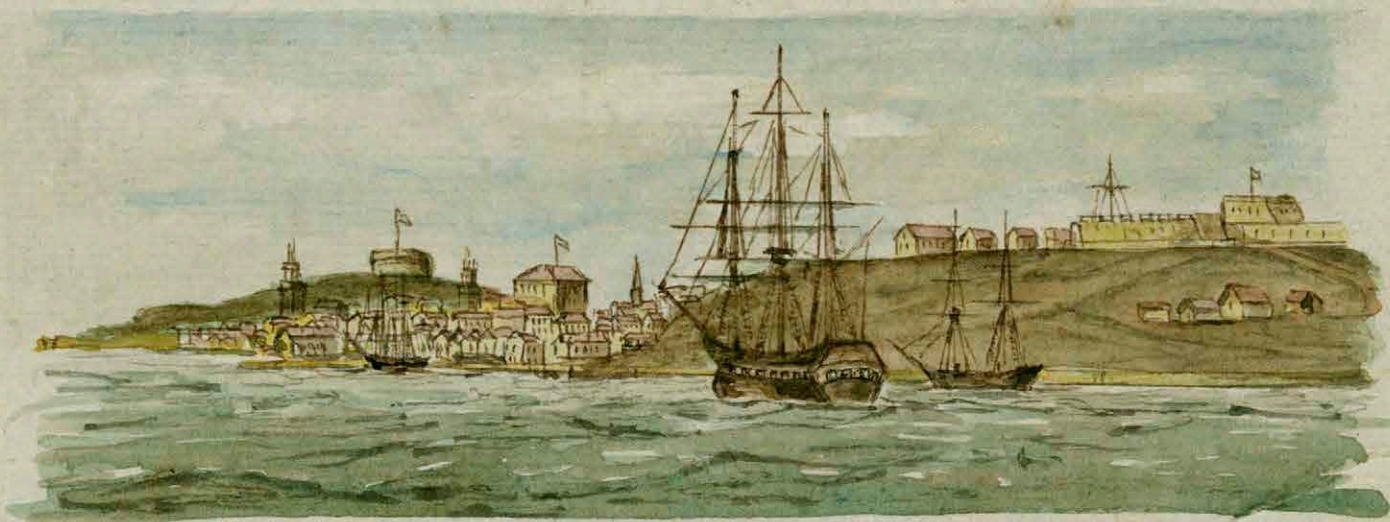
The image shows the front cover of an antique log book. The cover is primarily decorated with marbled paper featuring a complex, multi-colored pattern of reds, yellows, blues, and greens. A dark, worn leather spine is visible on the left side. In the center, there is a rectangular label with a decorative gold border. The label has a dark background and contains the text 'LOG BOOK 5' in gold, serif, all-caps letters. The book shows signs of age, with some wear and discoloration, particularly at the corners and along the spine.



PORT LOUIS. - MAURITIUS.



ZANZIBAR.



NASSAU.



SAN SALVADOR



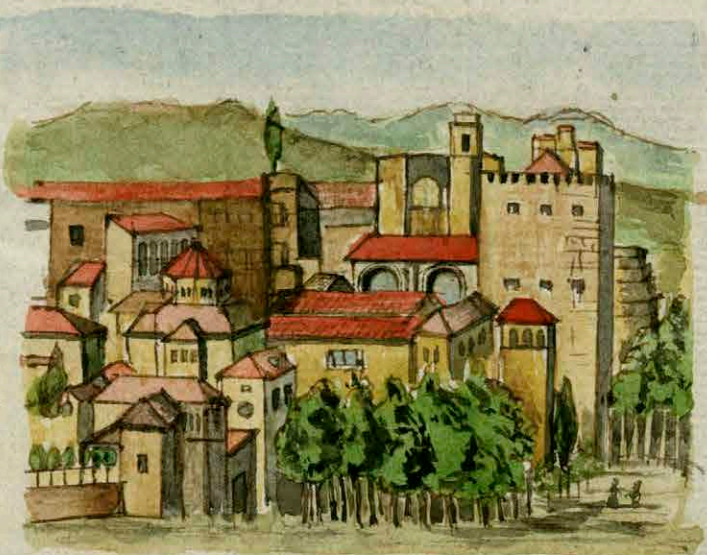
Harbour Island. Bahamas.



ENTRANCE TO THE HARBOUR OF RIO JANEIRO.



FROM SUMMIT OF THE CORCOVADO



ALHAMBRA.

GRANADA.

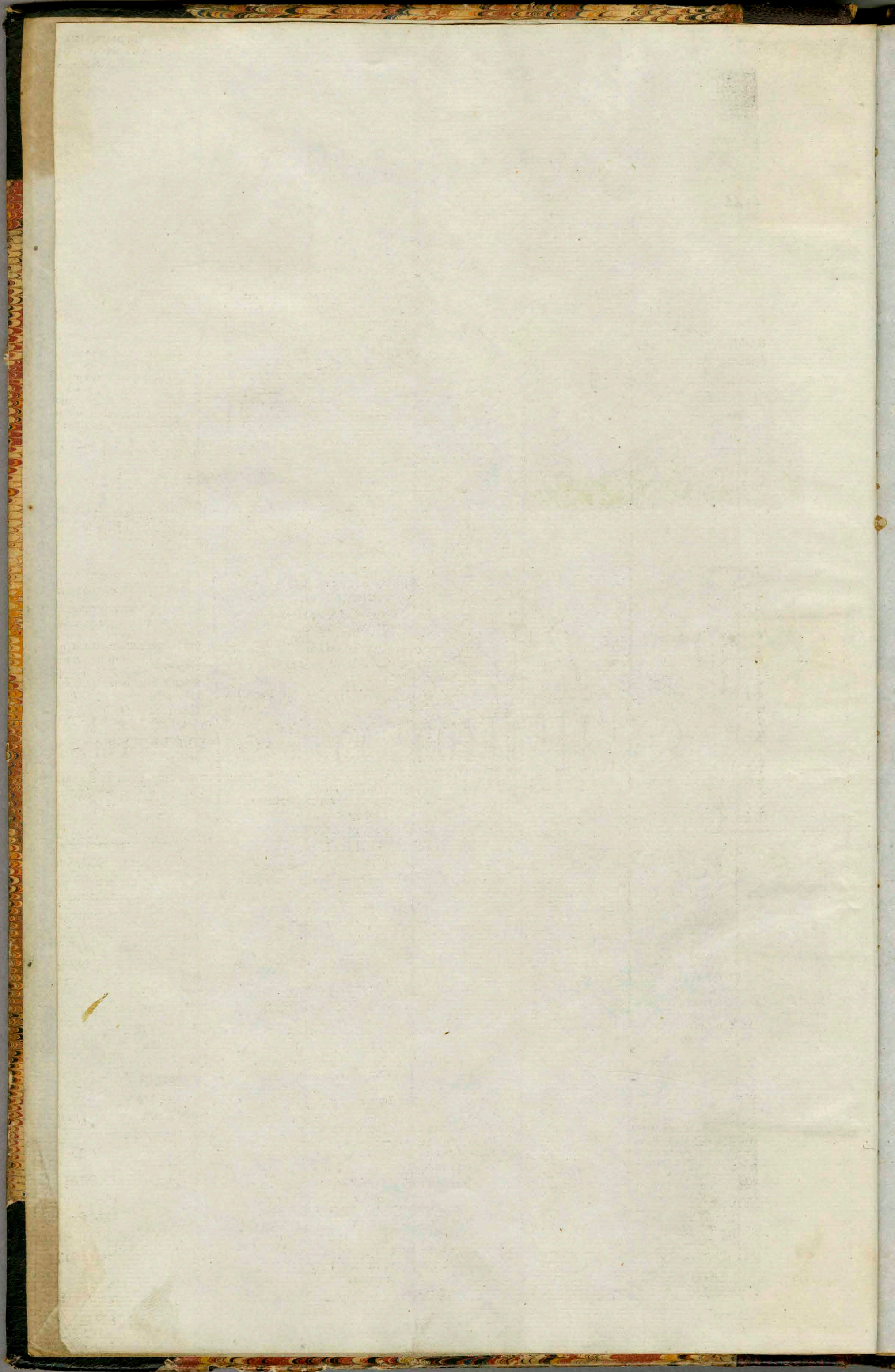


LISBON. 1871.

S.P.



BARCELONA 1851.



St. M. S. Hoop. Permethus. At Sea.

#	W	W	Courses	Winds	Weather	Remarks May 17 <sup>th</sup> 1857.
1				Calm	s. oc	At Sea.
2						
3						
4						Daylight Obs? the land
5		15 <sup>th</sup>	N.			I trimmed to a breeze from N.
6						Set jib.
7	2		N. by W	Vble	1. c	
8	1					Antifine sawing employed.
9	1					W. 4 <sup>th</sup> trimmed set Mizzen.
10			Calm	Calm	s. c	

Course	W	Lat S <sup>th</sup>	Lat N <sup>th</sup>	Long S <sup>th</sup>	Obs.	Bearings & Distances
North	5	5° 10' S		3° 10' W	3° 51' S	Days N 17 <sup>th</sup> W 17 miles

1				Calm	s. c	At Sea.
2						
3						5.30 Trimmed
4	8		N. E	W	1. oc	5.40 Mustered at Quarter.
5	8					6.15 Set sails Mizzen & Jib
6	5		N. W		2. oc	Mustered to the Head on Port Tack
7	2					Revised Jib sails Loring & furling
8	3		W. by N	West	4. c	& Tacked.
9	3					
10	3					
11	3					
12	3		W. by N	Vble		

#	W	W	Courses	Winds	Weather	Remarks Sunday 18 <sup>th</sup> May.
1	5		N. W	Vble	4. W	At Sea.
2	2					
3	2		West			6. Hours
4	2					I Mustered to the Head on P <sup>th</sup> Tack
5	2		N.	N. W	5. —	
6	1	5				
7	1	5				9.30 Mustered by Division
8	1	5				
9	1	4	N. E. S	S. N. W	2. —	Performed some work
10	2					
11	2	5	N. E?	Vble		
12	2					

Course	W	Lat S <sup>th</sup>	Lat N <sup>th</sup>	Long S <sup>th</sup>	Obs.	Bearings & Distances
North	11	5° 3' S	6° 0' S	3° 24' W	3° 27' S	Days N. E. W 26 miles.

1	2		N. E	N. W	2. W	At Sea.
2	2					
3	2					2. Obs? the land.
4	3					3.30 Trimmed
5	2	5				5.10 Mustered at Quarter.
6	1		North	East	7. oc.	8.30 Mustered all sail & lowered
7	4		West	S. N. E	6. oc	Up sails to a squall
8	3					8.30 Made sail & hauled to the
9	1	2	South	Vble	3. —	Head on P <sup>th</sup> Tack.
10	1	8				11 Taken aback head wind.
11	1	4				
12	1	8	S. N.		2. W	

H. M. S. Hoop Perimeters At Sea.

H	W	Wt	Course	Wind	Weather	Remarks
1	2	.	S 1/2 W	W.S	2. Bc	<p>May 19<sup>th</sup> 1851.</p> <p>3.30 Landed                      7.30 Hauled to the head on                      1<sup>st</sup> Deck                      8.30 1/2 sails 1/2 sails 1/2 sails                      9.30                      10.30 Mustered at quarters.                      Received a division of buttermilk.</p>
2	2	.				
3	2	.	W 1/2 S	S.W		
4	2	.				
5	2	.	W			
6	1	5				
7	1	2				
8	1	5	S	S.W		
9	1	.				
10						
11			Cal	Cal	S. Bc	
12						

Course	S	Lat Sk	Lat W	Long Sk	Chs	Bearing & Distance
W.S	21	5° 50' S	5° 47' S	5° 16' E	5° 10' E	Sages S 22° 35' E 42'

1	.	6	South	SE	2. Bc	<p>1. Bc.</p> <p>Received Watch at Market Hill</p> <p>2.30 1/2 Hoysals &amp; 1/2 jib.</p> <p>5.10 Received at General Quarters</p> <p>10.30 Hoysals 1/2 jib &amp; Main.</p>
2	1	2	S 1/2 E			
3	.	8				
4	1	.				
5	1	.				
6	1	.				
7	1	2				
8	1	8				
9	2	.				
10	2	.				
11	2	.				
12	2	.				

H	W	Wt	Course	Wind	Weather	Remarks
1	1	5	S	S.W	1. Bc	<p>Tuesday 20<sup>th</sup> 1851.</p> <p>Daylight to the land &amp; 1/2 jib                      at anchor off Madagy.</p> <p>9.30 Mustered at quarters Received                      Cannon &amp; Maines firing ball                      cartridge at a target</p> <p>Now about Madagy S 1/2 E 1/2 S.</p>
2	1	.				
3						
4						
5						
6			Cal	Cal	S. Bc	
7						
8						
9						
10						
11						
12						

Course	S	Lat Sk	Lat W	Long Sk	Chs	Bearing & Distance
W.S	34	6° 5' S	6° 16' S	5° 17' E	2° 12' E	Madagy S 1/2 E 1/2 S 8 miles

1	3	8	S 1/2 E	W	3. Bc	<p>1/2 Hoysals &amp; 1/2 jib 1/2 Hoysals 1/2 jib</p> <p>Received Watch at Market Hill</p> <p>5.30 Mustered at quarters.</p> <p>Received shuffling Main Hoysals</p> <p>8.30 Hoysals &amp; 1/2 jib &amp; 1/2 Hoysals 1/2 jib</p> <p>Hauled to the head on Main Deck</p>
2	4	4				
3	4	.	Running along			
4	3	8	the land.			
5	4	.				
6	3	.	S 1/2 E			
7	3	.				
8	3	5				
9	4	.	South	W 1/2 S		
10	3	5				
11	3	4				
12	3	4				

H. M. S. Hoop. Perseus. At sea.

#	H	St	Courses	Minds	Weather	Remarks May 21 <sup>st</sup> 1854
1	4	.	South	St. b	4. cl.	At.
2	3	.	1/2 h			to top gall sails
3	3	5	St. b			4. to top topsails up & down
4	3	2	St. b			pt. S. St. topsails & down
5	2	5				9. to top S. lowered topsails
6	3	.				to a squall.
7	1	.				
8	1	.	St. b	—	2. sea	
9	1	.	St. b			
10	2	.	St. b	St. b	7. sea	10. to lowered topsails
11	2	.			5. sea	
12	1	8	St. b	—	2. —	

Courses	St	Lat S <sup>th</sup>	Lat W <sup>th</sup>	Long S <sup>th</sup>	Wind	Bearings & Distances
St. b		5° 55' S		5° 26' E		Sago North 30 miles
1	2	.	St. b	St. b	3. sea	At.
2	3	8				
3	3	8				1. Made all plain sail.
4	3	.	North			5. 48 W. the land
5	2	.				5. Landed.
6	1	.	St. b			5. to Mustered at quarters
7	1	.	West	East	1. Be	to? shifting topsails
8	1	.	St. b			5. to lowered
9	1	.				9. to Landed.
10	1	.				
11						
12			Cal	Cal	5. Be	

#	H	St	Courses	Minds	Weather	Remarks Thursday May 22 <sup>nd</sup>
1				Cal	5. cl.	At.
2						
3						to top gall sails & pt
4						9. to Mustered at quarters.
5						Made all plain sail.
6						
7						
8						
9	1	6	St. b	West	1. Be	to? a division at Cuttop
10	1	6	St. b			to.
11	1	8				
12	2	.				

Courses	St	Lat S <sup>th</sup>	Lat W <sup>th</sup>	Long S <sup>th</sup>	Wind	Bearings & Distances
St. b	10	6° 14' S	6° 1' S	5° 18' E	5° 35' E	Sago N 20 W. 26 miles.
1	2	8	St. b	West	2. Be	At.
2	3	.				to? the land
3	3	.				Imp. Making & Mending clothes
4	3	.				to? a vessel at anchor off
5						Sago
6						5. to Mustered at quarters.
7						to? send 1/2 of log at 4. up & down
8						7. to Mustered sent & came to ft.
9						Sago & Sago second to 26 feet.
10			St	Anchor.		
11						
12						

H. No. 1<sup>st</sup> Hoop. Perimeters. At Sea.

#	H	1 <sup>st</sup>	Courses	Winds	Weather	Remarks May 23 <sup>rd</sup> 1857.	
1				W. Sw	S. Wc	At Sea.	
2							
3							
4			At			Arrived at General Quarters	
5							
6			Anchor	—	4 —	Leaving at 2 P.M.	
7							
8							
9							
10			At			Arrived for Sea Pilot.	
11							
12				—	S. d.		
Course	#	Lat	Stk	Lat	Stk	Wind	Bearings & Distances

1				West	S. d.	P.M.	
2							
3			At				Arrived from with full
4							price at 2 P.M.
5							
6			Anchor	Wc	4. Wc		Employed collecting down
7							upping
8							S. to Masthead at Quarters.
9			At				Arrived leaving & fulling sail.
10							
11							
12				—	S. d.		

#	H	1 <sup>st</sup>	Courses	Winds	Weather	Remarks Saturday 24 <sup>th</sup> 1857.	
1				W. Sw	S. d.	At Sea.	
2							
3							
4			At			S. to Masthead cable to topmast	
5			Anchor				
6				W. Sw	—		
7			At			Employed as requisite	
8							
9							
10							
11							
12				—	—		
Course	#	Lat	Stk	Lat	Stk	Wind	Bearings & Distances

1				South	4. Wc	P.M.	
2							
3							
4							
5			At				Employed as requisite
6			Anchor	—	6. Wc		
7							
8							
9			At				S. to Masthead at Quarters.
10							
11							
12				—	—		



H. No. 1<sup>st</sup> Corps P. Instructions. At Sea.

H	N	W	Course	Winds	Weather	Remarks
1				W. B.	4. c	At Sea.
2						
3						
4						8. 45 Sailed & made all plain
5	At		Anchored			sail
6				W. B.	5.	
7						10. 45 Mustered by Surgeon
8						Performed Service
9	2		W.			
10	2	6	W. S.			
11	2					
12				Cal.	0. B.	From By Sea of Lagos 11. 45

Course	S	Lat S <sup>th</sup>	Lat W <sup>th</sup>	Long S <sup>th</sup>	Cher	Bearings & Distances.
						By Sea of Lagos 11. 45
1	"	4	W.	1	B.	
2	1	2	South			
3	1	2				
4	1	8	W.			1. Manned. & Lashed.
5	2	"				
6	2	"				5. 45 Mustered at quarter.
7	1	"				
8	2	"	W. S.	W. S.	5. —	
9	2	8	W.	W.	1. B.	6. 45 Lashed board in sight.
10	2	"	W. S.			
11	2	"	W. S.			Mist 4 miles.
12	1	"				

H	N	W	Course	Winds	Weather	Remarks
1				Cal.	0. c	At Sea.
2						
3						
4						Obs <sup>d</sup> a barque to the West.
5	1	5	W. S.	W. S.	2. 15	8. 15 Mustered sail to a point
6	1	2	W. S.			
7	1	"				
8	1	"				9. 15 Obs <sup>d</sup> a steamer to the West.
9	4	"	W.	W.	5. 15 W.	
10	3	"				
11	2	"	W.			10. 45 Made sail.
12	1	2	W. S.		3. 15	

Course	S	Lat S <sup>th</sup>	Lat W <sup>th</sup>	Long S <sup>th</sup>	Cher	Bearings & Distances
1						
2						
3						
4						
5						
6						10. 45 Exchanged with the ship
7						"Miji" & Obs <sup>d</sup> & sail at anchor
8						at Madagay set Hoysals & 7. 15
9						Mustered sail
10	At		Anchored			4. 45 Mustered sail & came to in
11						10 fms of Madagay & sail to 3 fms
12						land from Hoysals & Hoysals.

H. M. S. Hoop. Perimeters. At Sea.

#	H	Wt	Courses	Winds	Weather	Remarks
1				W N W	S. by E.	At Sea.
2						
3						
4	A		Auction			8 top galls & Royal yards. Sailed 5 <sup>th</sup>
5						
6						
7				Calm	S. by E.	9 Mustard at quarters.
8			Badaguy			Secured small iron men firing at a target.
9						
10						
11						
12				West	1 -	

Course	S	Lat S <sup>R</sup>	Lat O <sup>h</sup>	Long S <sup>R</sup>	Wind	Bearing & Distance
1					W	S. by E.
2						
3	A					
4						
5						
6	1	5	W. S.		W N W	2 -
7	2					
8	1	5				
9	1	5				8-10 top galls made all galls sail
10	2	8	S S E			
11	2	8				
12	2	8				10 In Royal etc. & 1 job. Sailed.

#	H	Wt	Courses	Winds	Weather	Remarks
1	3	8	W	W N W	S. by E.	At Sea.
2	3		S			
3	3	4				
4	2	8				
5	2	5				
6	2	5	S S E			
7	1	5				
8	1	6				
9	1	4				
10	1	4		W N W	S. by E.	9 Mustard at quarters.
11	1	6				Secured a division at quarters.
12						10-10 Secured top galls to a small 12 How top top galls

Course	S	Lat S <sup>R</sup>	Lat O <sup>h</sup>	Long S <sup>R</sup>	Wind	Bearing & Distance
1						
2					Calm	S. by E.
3						
4						
5						
6	1		S		South	S. by E.
7	2	5			W N W	
8	2	2				8-10 Mustard at quarters.
9	1	8			South	W N W
10	1					10 top galls sail. Secured 11 top galls
11						
12					Calm	S. by E.

No. M. S. Hoop. Promotions. At Sea.

No.	M.	S.	Courses	Winds	Weather	Remarks
May 29 <sup>th</sup> 1881.						
1				Calm	S. sea	At.
2						1. Lashed 120.
3						7 up. Fossil & lowered top-sails
4						8 to Masthead top-sails set Fossil
5						9 to Masthead at quarters
6						lowered & hauled down 10th
7						top gall sails top-sails &
8						hoist
9	1	5	S. by E	At.	2 eggs	
10	1		South			
11	2		S. by E			
12	3	5	S. by E		S. Be	Don't know the land from West

Course	S.	Lat. N	Lat. W	Long. E	Obs.	Bearings & Distances
S. by E	28	6° 1' N	6° 4' W	3° 25' E	3° 54' E	Days 152° N 36 miles
1	3	4	S. by E	W. by N	4 eggs	PM.
2	3	4				
3	3	6				
4	3	6	S. by E	W. by N		Emp. Log & Making & Mending clothes.
5	3	6				
6	3	8				5 to the Regal.
7	3	2	S. by E			8 to Masthead at quarters.
8	3	4				Hoisted the Regal
9	2	8	S. by E	W. by N	3. c.	
10	2	5	S. by E			
11	2	5				
12	2	5				6. Nov.

No.	M.	S.	Courses	Winds	Weather	Remarks
Friday May 30 <sup>th</sup>						
1	2	8	S. by E	W. by N	S. Be	At.
2	2	6				
3	2	6				
4	2	2				
5	2	2	S. by E	At.	1. c.	
6	2					Lowered at general quarters
7	1	8				
8	1	8				
9	1	8	S. by E			
10	2	4	S. by E			
11	2	4	S. by E			
12	1	4	S. by E			

Course	S.	Lat. N	Lat. W	Long. E	Obs.	Bearings & Distances
S. by E	28	5° 55' N	5° 44' W	3° 30' E	3° 52' E	Days 132° N 49 miles
1	2	8	S. by E	At.	2 eggs	PM.
2	3	6	S. by E			
3	3	8	S. by E			
4	3	8				1. Lashed.
5	4	8				
6	4	1	S. by E	W. by N	S. Be	
7	5	2	S. by E			8 1/2 Masthead at quarters.
8	5	2				
9	4		South			
10	3					1. Lashed to top gall sails.
11	2	8				
12	2	6				





H. M. 1<sup>st</sup> Hoop.      Pinnacles      At Sea.

H	M	W	Course	Winds	Weather	Remarks
1				W	4. oc	At Sea.
2						
3			At Single			Loosed sails
4						Mustered at quarters.
5				West	Be	
6			Anchor off			Secured & mustered quarters.
7						
8						
9			Lagos.			Employed as requisite
10						
11				W	6. oc	
12						

Course	S	Lat	Long	Dist	Bearings & Distances	
1			W	6	Be	PH.
2				7	oc	
3			At Single			1.30 Lashed sails.
4						
5						Employed as requisite
6			Anchor off	West	6. oc	1.30 Mustered at quarters.
7						
8			Lagos.			Employed by Royal guards
9						
10						
11				8	c	
12						

H	M	W	Course	Winds	Weather	Remarks
1				W	5. oc	At Sea.
2						
3						4. Mustered in cable.
4			At Anchor			5.30 Ripped, made all plain sail
5						
6				W	1. Be	9 Secured at General Quarters
7						
8						10 In Royals.
9	5		S.S.E.			
10	1		N.E.	W		
11	1		W			
12	1		South			

Course	S	Lat	Long	Dist	Bearings & Distances	
					By Lee N <sup>o</sup> N <sup>o</sup> Quon N <sup>o</sup>	
1	1		South	W	2. Be	PH.
2	1					1.30 Let Royals & Flying jib.
3	1	2				
4			Handing down the land			4.30 Lashed.
5						
6				W	3. Be	5.30 Mustered at quarters.
7	5	2	N.W.	W		Secured per 7 in Bill.
8	1	5	South			
9	3					4.30 Lashed.
10	2	5	S.E.			
11	1	5	S.W.			8 In Royals Flying jib & top gall sails.
12	1		South			

H. M. S. Hoop. Promethus. At Sea.

#	H	10'	Course	Winds	Weather	Remarks
1	.	6	SW	W	1 cl	<p>At Sea.</p> <p>3. so Musters sail to a square</p> <p>Say 11. Obs? the land &amp; steps</p> <p>of Anchor off Saps</p> <p>7. so Musters the Topsails</p> <p>Employed as requisite</p> <p>11. Musters the Topsails.</p>
2	.					
3	.					
4	2	.	SW	SE	6 cop.	
5	2	5				
6	1	.	S 1/2 E			
7	1	.				
8	.	5				
9	1	2	SW	N by E	3. 19	
10	1	2				
11						
12						

Course	S	Lat SK	Lat Cho	Long SK	Chrs	Bearings & Distances
South	10'	6. 4 1/2		5. 31 1/2	3. 30 1/2	Saps S 15 30 W 12'
1	1	.	South	West	2. 13 1/2	<p>At Sea.</p> <p>1. set Topsails &amp; Tinsail</p> <p>Braced up on P. Tack.</p> <p>Employed as requisite</p> <p>5. so Musters at Quarter.</p> <p>Dismissed Top Gall. &amp; Royal</p> <p>yard men 6 so Musters.</p> <p>Ground N 1/2 N 7 or 8 miles.</p>
2	1	.	N 1/2 W			
3	1	5				
4	1	5				
5	1	6	S 1/2 W	West 1/2	2. 16	
6	1	6				
7	.	8	SW			
8	1	6	S 1/2 W	N 1/2 W	3. 1	
9	1	8				
10	2	.				
11	2	2				
12	2	2				

#	H	10'	Course	Winds	Weather	Remarks
1	2	5	S 1/2 W	N 1/2 S	2. 16	<p>At Sea.</p> <p>4. Musters Say 11. Obs? the land.</p> <p>8. set Top Gall sails &amp; jib.</p> <p>9. so Musters by Division</p> <p>Performed Service</p> <p>11. so Obs? 1/2 M. Anchor.</p>
2	2	5				
3	2	5				
4	2	5				
5	2	.	SW			
6	1	8				
7	1	5				
8	1	5				
9	2	5				
10	2	5				
11	3	.				
12	3	.				

Course	S	Lat SK	Lat Cho	Long SK	Chrs	Bearings & Distances
SW	11'	6. 11 1/2	6. 11 1/2	3. 15 1/2	3. 30 1/2	Saps S 29 1/2 W 12'
1	2	8 1/2	SW	N 1/2 S	3. 16	<p>At Sea.</p> <p>1. so Tacked 2. so Musters sail</p> <p>hoor to &amp; communicated with</p> <p>"Anchor" at 11. Musters &amp; condemned</p> <p>stores on board. Discharged Mr. Kemp.</p> <p>Master Assail for papers to Ascension</p> <p>Wasp? 6 1/2 M. made sail</p> <p>parted 6.</p> <p>land a sight dist. 11 or 12 miles.</p>
2	1	4	SW			
3						
4			Wine to.			
5						
6			S 1/2 E			
7	1	.				
8	2	.				
9	2	5	South			
10	3	.				
11	2	5	S 1/2 W			
12	2	5				

H. M. S. Hoop. Prometheus. At Sea.

H	M	W	Courses	Winds	Weather	Remarks
1	2	6	South	W. W.	3. Bc.	<p>Ala.</p> <p>2. Taked. 5.30 to top of gale etc.</p> <p>3. &amp; 4. sail</p> <p>5. to fore set Mt. Topail</p> <p>7. to make all plain sail</p> <p>Take aboard hand round</p> <p>of Mustard at quarters</p> <p>See? Quarters deck quarters.</p>
2	2	6				
3	2	6	N. W. W.			
4	2	5				
5	2	5	S. W.	W. S.	2	
6	2	5				
7	1	5				
8	1	5	W.	N. W.	— see	
9	1	6	S. W.	W.	2. oc	
10	1	6				
11	1	6				
12	1	6			1. oc	

Course	S	Lat	Long	Dist	Bearing	Distance
137.8	11	6. 6. N	5. 59. E			Says at 320 W. 24 Miles.

1	1	6	S. W.	W.	1. oc	<p>Ala.</p> <p>1. 15 Let top of gale sails etc. the</p> <p>land 1. Long this 5. 59. E.</p> <p>2. 20 Connected &amp; proceeded on</p> <p>2<sup>nd</sup> ship. shortened all sail</p> <p>5. to Mustard at quarters. made</p> <p>all sail etc. 3. 30 up at anchor</p> <p>6. to fore to disconnected</p> <p>Filled at Sparker.</p>
2	1	6				
3	4	5	N. W. W.			
4	6	5				
5	5	5				
6	2	5	N. W. W.			
7	3	5				
8	4	5	N. W. W.	S. W.	4. Bc	
9	4	6				
10	3	6				
11	2	8				
12	2	8				

H	M	W	Courses	Winds	Weather	Remarks
1	3	6	S. W.	W. W.	3. Bc.	<p>Ala.</p> <p>3. Taked &amp; taken aboard hand</p> <p>round in S. of gale etc. the land</p> <p>7. to etc. a sail running along the</p> <p>land. 3. 30 up at anchor off says.</p> <p>9. Mustard at quarters.</p> <p>9. to Mustard sail to top sails</p> <p>10. Board round on Port Jack.</p>
2	3	6				
3	3	6	N. W. W.			
4	3	6				
5	3	6	N. W. W.	West S.		
6	3	6	S. W.			
7	3	5	N. W. W.	S. W.	3. oc	
8	2	5				
9	2	5				
10	1	5	S. W.	W.	4. oc	
11	3	5	N. W. W.			
12	2	5	S. W.	W.	4. oc	

Course	S	Lat	Long	Dist	Bearing	Distance
137.8	45	6. 14. N	5. 17. E			

1						<p>Ala.</p> <p>12. to etc. a steamer at anchor</p> <p>1. 20 Make all plain sail</p> <p>1. 55 Connected &amp; proceeded for</p> <p>Says. 3. Exchanged W. with</p> <p>H. M. S. Sampson</p> <p>1. 30 Shortened sail &amp; came to</p> <p>off says in 7 fms. need to</p> <p>40 fms.</p>
2						
3						
4						
5						
6						
7						
8						
9						
10						
11						
12						



H. M. S. *Porpoise*. At Sea.

H	To	Course	Winds	Weather	Remarks
1			West	4. oc	At.
2					
3					
4	At	Anchor			5. Put Paddle box boats.
5					
6					Employed receiving provisions
7			W	4. cop.	from "Lampson."
8		Says.			
9					1. Mowing hold.
10					
11					
12			At.	5. oc	

Course	Lat	Obs	Long	Obs	Bearings & Distances
--------	-----	-----	------	-----	----------------------

1					
2			W	3. oc	PM.
3					
4	At	Anchor			Employed as in forenoon
5					
6					
7					Put Paddle box boats.
8		Says			
9					
10					Sailed H. M. S. "Lampson."
11					
12					

H	To	Course	Winds	Weather	Remarks
---	----	--------	-------	---------	---------

1			West	3. c	At.
2					
3					Down sails
4	At	Anchor			
5					
6					Mustered at quarters.
7			At	2. -	
8		Says			Received a division of Cattle & sheep
9					
10					
11					Stowed sails.
12			Arch.	2. Be	

Course	Lat	Obs	Long	Obs	Bearings & Distances
--------	-----	-----	------	-----	----------------------

1					
2			W	3. Be	PM.
3					
4	At	Anchor			Employed as requisite
5					
6			W	4. cop.	
7					Mustered at quarters.
8		Says.			Received sending 50 Gall &
9					Royal yards up & down.
10					
11					
12			West	3. Be	



H. M. S. Hoop. Promethon. At Sea.

H	H	W	Course	Winds	Weather	Remarks June 15 <sup>th</sup> 1857.
1	2	8	South	W <sup>h</sup> W	S. Bce	AM.
2	2	8				
3	3	"				3.45 Wce.
4	2	"				
5	2	"	NW	N <sup>h</sup> S	7. cyp.	
6	2	"				8 Up & raised & lowered Sp. S.
7	1	"				
8	"	"				
9	1	"	South	W <sup>h</sup> W	S. sea	9 Wce in 1 <sup>st</sup> & 2 <sup>nd</sup> reef of Sp. S.
10	"	5	N <sup>h</sup> S			
11	1	5				9. Wce.
12	1	"			S. sea	

Course	S	Lat S <sup>h</sup>	Lat W <sup>h</sup>	Long S <sup>h</sup>	Chas	Beacons & Distances
118 <sup>o</sup> 8'	50	5 <sup>o</sup> 55' S		5 <sup>o</sup> 35' S		Says N <sup>h</sup> W 31 Miles.
1	"	"	W <sup>h</sup> W	2. sea.	PM.	
2	1	"	N <sup>h</sup> W <sup>h</sup> S			1.15 Put up with Sp. S. fall sails
3	2	"				try. into jib & T. main.
4	3	"	N <sup>h</sup> W <sup>h</sup> S		S. Bce.	
5	3	"				
6	3	"	NW			5.15 Mustered at quarter No. 2
7	3	"				& Vepels at anchor off days.
8	1	5	South	N <sup>h</sup> S	S. Bce	6. By Sea North Gun A?
9	2	5				7 Wce in Sp. S. fall sails.
10	2	5				
11	3	2				
12	2	5				

H	H	W	Course	Winds	Weather	Remarks Monday 16 <sup>th</sup>
1	2	5	South	N <sup>h</sup> W	4. Bce	AM.
2	2	5				
3	2	5				
4	2	5				
5	2	5	N <sup>h</sup> W <sup>h</sup> S			9 Mustered at quarter
6	2	5				
7	2	5	N <sup>h</sup> W	N <sup>h</sup> W	S. C	Examined shifting the top rail
8	2	5				yards
9	2	5				
10	1	5	N <sup>h</sup> W <sup>h</sup> S			Set Main Sp. sail & down
11	1	5				
12	1	"	N <sup>h</sup> W		S. Bce	Sea Land in sight

Course	S	Lat S <sup>h</sup>	Lat W <sup>h</sup>	Long S <sup>h</sup>	Chas	Beacons & Distances
North 25		5 <sup>o</sup> 4' S	5 <sup>o</sup> 15' S	5 <sup>o</sup> 25' S	5 <sup>o</sup> 15' S	Says N <sup>h</sup> W 21.
1		Running along the land.	N <sup>h</sup> W	3. Bce	PM.	
2						
3						
4						
5	7	5	N <sup>h</sup> W			1.30 No. 2 American barque weigh for
6	5	5				Says connected & proceeded in
7	13	5				Chas. crossed Mt. Sp. sail & made
8	24	5	N <sup>h</sup> W		S. C	all plain sail
9	4	5	N <sup>h</sup> W			5.15 Mustered at quarter. 6.30 put
10	2	5				a Hank gun to bring down to. attend
11	2	5				to as report 7.30 in log also & Sp. S.
12	2	5				6.15 fired a Hank gun. 11.00 to &
						founded the American barque Jasper
						G. Tilled on P. Jack. 12. Lashed.

To. M. P. Hoop. From them At Sea.

H	M	Wt	Course	Wind	Weather	Remarks June 17 <sup>th</sup> 1864
1	2	6	S 1/2 W	W SW	S. cum	All. 4. Lashed. 8. Obs? the land 9. Mustard at quarters. Received a division of bottles 11. Obs? says see S 8' S 10 miles 1. 1 Vessel at Anchor.
2	2	8				
3	2	6				
4	2	8				
5	2	8	N 1/2 W			
6	5	"	S A W			
7	2	8	N 1/2 S		S. cu.	
8	2	8				
9	2	8	N 1/2 W			
10	1	"				
11	2	8	N A W	N 1/2 E		
12	2	8			S. cu.	

Course	S	Lat S	Lat W	Long S	Obs	Bearings & Distances
						Says see S 8' S 13 miles

1						All. 12. 45 from the Hoop do. Received quarters deck quarters Obs? sail to S. 8. 4. 30 Obs? sail to be WMS Sampson 4. 50 Mustard sail & came to with 11 in 7 fms off says secured to 8. 5. 15 Lashed sail 8. 2. Lashing & furling sails. 8. Hunt a blue light to then position to Sampson.
2						
3						
4						
5						
6						
7						
8						
9						
10						
11						
12						

H	M	Wt	Course	Winds	Weather	Remarks Wednesday 18 <sup>th</sup>
1						All. Sayll. Obs? "Sampson" standing in 8. Dipped & made all plain sail in that tack. 9. 30 from to in 6 with Sampson 8. Lashed & made sail 9. 30 Mustard at quarters Received a division of Mustard 10. 30 Hoop up boat & filled. 11. Lashed.
2						
3						
4						
5						
6						
7						
8						
9						
10						
11						
12						

Course	S	Lat S	Lat W	Long S	Obs	Bearings & Distances

1	2	"	N 1/2 W	W SW	2. Be	All. 1. Hoop do. & 7. 10. Received a division of bottles 2. 35 Lashed in Hoop do. 3. 15 Lashed. 4. Mustard sail & came to off Hoop in 7 fms secured to 8. Mustard at quarters Hunt Sampson in sight.
2	3	2				
3	2	1				
4						
5						
6						
7						
8						
9						
10						
11						
12						

H. M. S. Sloop *Pomethoon* Lagos.

Date	Winds	Weather	Remarks	June 1857
Wednesday 19 <sup>th</sup>	West	4. c	AM.	Mustered at Quarters.
	W. by N	5. cp.	PM.	Inspected a division of Cutlassesmen Articles variously employed.
	West	7. oc		Issued slops to Messes Company Employed Making & Mending clothes Mustered at Quarters Inspected shifting Top sails.
Thursday 20 <sup>th</sup>	W. by N	5. oc	AM.	Employed as requisite
	W. by S	6. cc.	PM.	Carpenters repairing Whaler Obs <sup>d</sup> a steamer the port <sup>ed</sup> Obs <sup>d</sup> heeds to be French steamer of War "Blanchon" sent a boat to board French steamer
	West	4. c		Inspected at General Quarters.
Saturday 21 <sup>st</sup>	West	5. e	AM.	Dressed sails
	—	6. bc	PM.	Employed as requisite Carpenters repairing Whaler Shifted Fore Top sail Packed sails.
	—	— cp.		Mustered at Quarters.
Sunday 22 <sup>nd</sup>	W. by N	7. e	AM.	Sailed the Sandeman Bay "Pallant".
	W. by N	5. cp.	PM.	Mustered by divisions read Articles of War Mustered per Off <sup>r</sup> duty & Performed some work.
	W.	6. —		Mustered at Quarters.

H. M. S. Hoop. Perseus. At Sea.

#	H	M	Course	Winds	Weather	Remarks June 23 <sup>rd</sup> 1851.
1				South	S. bc	At anchor in 1 <sup>st</sup> Cuttle to
2						Upon
3						Mustered at quarters.
4						Received Foremost Quarter
5						& a division of Cuttlepen
6				SW	2 -	Finished off Willis Bed 2 <sup>nd</sup> C.
7						with 48 lashes for getting drunk.
8						
9						
10						
11						
12				W.S	5 -	

Course	H	M	Lat S <sup>th</sup>	Lat Obs	Long S <sup>th</sup>	Obs	Bearings & Distance
--------	---	---	---------------------	---------	----------------------	-----	---------------------

1				West	2. oc	Pth.	
2							
3							Rec <sup>d</sup> a division at Musquet
4							stole
5							
6							4. Replied & made all plain
7	3		South	SW	3. bel.		sail on Star <sup>d</sup> Lark.
8	3						5.10 Mustered at quarters Rec <sup>d</sup>
9	3		SW	W.S	4. il.		Mustering topsails 6. Quora S <sup>th</sup>
10	3						By Sea S <sup>th</sup> .
11	3	5					
12	3	5					9.55 the Royals.

#	H	M	Course	Winds	Weather	Remarks Sunday 24 <sup>th</sup> .
1	3	5	SW	West	4. bel.	At anchor
2	3	2				
3	2		SW			2. Lashed. 4.15. Wore
4	2		SW			7 Obs <sup>d</sup> a sail on W <sup>l</sup> bow.
5	2		SW			9 Mustered at quarters 9.30
6	2	5				shortened sail & hoisted Obs <sup>d</sup> a
7	2	8				point to the West. Communicated
8	2	8				with Alerts <sup>d</sup> 11 Sailed set Royals
9	3	2	SW	SW	5. ten.	from commuted shortened all sail &
10	1	2				proceeded in chase, parted
11			to			C <sup>d</sup> from Alerts <sup>d</sup> .
12	2		SW			

Course	H	M	Lat S <sup>th</sup>	Lat Obs	Long S <sup>th</sup>	Obs	Bearings & Distance
--------	---	---	---------------------	---------	----------------------	-----	---------------------

SW	30'		5° 45' S	5° 31' S	3° 25' E	3° 38' E	Sage S 12° 30' W 50 Miles.
1	2		SW	SW	3. oc		
2	4		SW				At 9.00 & all sails
3	5	5	SW				1.45 Made all plain sail to 1/2 sail
4	16	5	SW	West	4. oc		Altered course as required in chase
5	4		SW				Received a division of Cuttlepen
6	8		SW				4.40 Went on full power both booms
7	8						5.10 Mustered at quarters Rec <sup>d</sup>
8	5						small arm men 6.40 lost sight
9	2		SW	W.S	3. oc		of chase 7.45 Stopped & disconnected
10	2						sounded in 30 fms land
11	2	5					8. Sailed & made sail. 10 Tacked.
12	2						

H. M. S. Hoop. Prometues. At Sea.

#	H	W	Course	Winds	Weather	Remarks
1	3	4	Sth	b' S	4. c	Mh.
2	3	4				
3	3	4				
4	2	5				
5	2	4	Sth	West	3. bcw.	4. Proc. Sayll. Tho? a sail Sth.
6	1	5	Sth	Wle	2. oc	5. In Jy sails I wasail & jib.
7	1	5	Sth	Wle	2. oc	6. Set S: & Jy sails.
8	1	4				
9						11. to set Hoys also & J jib.
10	4		Sth	Calm	0. oc	
11						
12	4	5	Sth	Wle	1. oc	Mon 1 sail in sight.

Course	S	Lat Sth	Lat Tho	Long Sth	Tho	Bearings & Distances.
Sth	41	60 2' S	60 6' S	30 52' E	30 17' E	Says Sth to S 22 Miles.
1		Calm	Calm	0		
2	1	Sth	Sth	3. oc	Mh.	
3	4	5				
4	1	5	Sth	West	3. oc	1. Tho? the land 1.35 Proc set Sth. Stud
5	2	5	Sth	West	3. oc	Sails 2.50 In Snow Studd 9 sails
6	3	5	Sth	West	3. oc	3.50 In Jy. Tho? Stud set sail &
7	3	5	Sth	West	3. oc	Quarrel 5.10 Exc? at General
8						Quarrel 7.45 In Hoys also & J jib.
9						8. Shortland & I sailed sail came to
10						with Sth in 12 fms reced to 5 fms
11						11. to Exc? firing at Night Quarrel.
12						

#	H	W	Course	Winds	Weather	Remarks
1				West	2. bc	Mh.
2						
3						
4						
5				Wle		
6						
7						
8						
9						
10						
11						
12						

Course	S	Lat Sth	Lat Tho	Long Sth	Tho	Bearings & Distances
						Says Sth to S 8 Miles.
1						
2						
3						
4						
5						
6						
7						
8						
9						
10						
11						
12						

H. M. 1<sup>st</sup> Hoop. Promethon. Lagos.

Date	Winds	Weather	Remarks	Year
Sunday 27 <sup>th</sup>	West	2. Bc	AM.	1857.
			Mustered at quarters.	
	W. SW	6. Bc	PM.	
Saturday 28 <sup>th</sup>	West	6. oc	AM.	
			Employed as requisite	
	W. SW	7. cyp.	PM.	
	West	6. c.		

H	R	W. Course	Winds	Weather	Remarks
1			West	5. c	AM.
2					
3					
4					
5					
6					
7			SW	4. a	
8					
9					
10					
11					
12					

Course	S	Lat S <sup>th</sup>	Lat W <sup>th</sup>	Long S <sup>th</sup>	Plus	Remarks & Distances.
1						
2						
3						
4						
5						
6						
7	3	5	SW <sup>th</sup>	W. SW	4. oc	5-10 Mustered at quarters
8	3	5				Lacked.
9	3		SW	W. S	3. sep.	7-10 In Koyals & I. Jib.
10	3					
11	3					
12	3					I Lacked



H. M. S. Sloop Prometheus At Sea.

#	H	W	Course	Winds	Weather	Remarks June 30th 1861.
1	2	"	South	W SW	4. oc.	M.
2	2	"	SW	West	5. oc.	
3	2	8	SW S			
4	2	2				
5	2	5	S W			
6	2	"				
7	1	5				
8	2	"				
9	2	"	W SW	SW	3. oc.	
10	2	8				
11	2	"	S W			
12	1	"	SW W			

Course	Lat	Long	Dist	Dist	Dist	Bearings & Distances.
S 15° E	13'	5° 4' S	5° 5' S	3° 20' E	3° 26' E	Days North 20 Miles.

1	2	8	SW W	W S	3. oc.	P.M.
2	3	"	SW			
3	2	2				
4	2	5				
5	1	5	SW S			
6	1	6	SW	W W	2. oc.	
7				Cal	6. oc.	
8						
9	1	5	S W			
10	3	"	SW	W SW		
11	2	2	SW W			
12	2	"	SW			

#	H	W	Course	Winds	Weather	Remarks Tuesday July 1st
1	1	5	S W	W SW	2. oc.	M.
2	1	5				
3	1	5	S W	West.		
4	1	5				
5	1	5				
6	1	5				
7	2	"	S W			
8	1	"				
9	1	"	S W	SW W	1. oc.	
10	"	8	West.			
11	"	8				
12	"	8				

Course	Lat	Long	Dist	Dist	Dist	Bearings & Distances.
S 58° E	36'	5° 48' S	5° 38' S	3° 14' E	3° 48' E	Days N 25° W. 55 Miles.

1	1	"	W S	SW	2. oc.	P.M.
2	2	5	W S S			
3	3	5	W S S			
4	3	5	W S S			
5	3	5	W S S			
6						
7						
8						
9						
10	2	"	SW W	W SW	2. oc.	
11	1	8				
12	1	6				

H. M. S. *Porpoise* *Pennsylvania* At Sea.

H	M	Vol	Courses	Winds	Weather	Remarks July 2 <sup>nd</sup> 1841.
1	2	8	Nb <sup>h</sup>	Nb <sup>h</sup>	2. Bc	<p><i>Alh.</i></p> <p>Sayl. Ols? <i>Katigun</i> or <i>P. Soc.</i></p> <p>6 let <i>Koyals</i> &amp; 3 jib.</p> <p>8 let <i>P. S. M. S. Muddel</i> &amp; sails.</p> <p>9 Mustered at quarters.</p> <p>Examined <i>S. M. S. M. S. M. S.</i></p> <p>Ols? a sail on <i>Lebanon</i> Ols? sail to the</p> <p><i>English</i> <i>Sargue</i> <i>Lebanon</i> <i>1/2 Muddel</i>?</p> <p>Sail &amp; haul up 2 sail on <i>right</i>.</p>
2	3	"				
3	2	4				
4	2	4				
5	2	"	Nb <sup>h</sup>	Nb <sup>h</sup>		
6	1	2	Nb <sup>h</sup>			
7	1	2	Nb <sup>h</sup>			
8	2	"				
9	2	5	Nb <sup>h</sup>	Nb <sup>h</sup>		
10	3	"				
11	2	2	Nb <sup>h</sup>			
12	1	2	Nb <sup>h</sup>			

Course	S	Lat S <sup>h</sup>	Lat Ols	Long S <sup>h</sup>	Obs	Beatings & Distances
N 39 W	38	5° 5' S	6° 5' S	3° 4' E	3° 26' E	Days North 21 Miles

1	3	"	Nb <sup>h</sup>	Nb <sup>h</sup>	3. Bc	<p><i>Alh.</i></p> <p>2 Ols? the land.</p> <p><i>Artificers</i> <i>variously</i> <i>employed</i></p> <p>5. 15 Mustered at quarters.</p> <p>Examined small arm men</p> <p>7. 45 Mustered sail &amp; came to</p> <p>with <i>1/2</i> in <i>10</i> fms. secured to</p> <p><i>top</i> <i>S. M. S. M. S.</i></p>
2	3	5	Nb <sup>h</sup>	Nb <sup>h</sup>		
3	3	5				
4	3	"	Nb <sup>h</sup>			
5	2	5				
6	2	5				
7	3	"	Nb <sup>h</sup>	Nb <sup>h</sup>		
8						
9						
10						
11						
12						

H	M	Vol	Courses	Winds	Weather	Remarks Thursday 3 <sup>rd</sup> July
1				West	5. C	<p><i>Alh.</i></p> <p>Sayl. Ols? the <i>Sargue</i> <i>Lebanon</i> &amp; <i>M. S.</i></p> <p>Mustered in <i>Cable</i></p> <p>6 Weighed &amp; made all <i>plan</i> <i>sail</i></p> <p>on <i>Star</i> <i>Lack</i> <i>of</i> <i>the</i> <i>Koyals</i>.</p> <p>9 let <i>Koyals</i> &amp; 3 jib.</p> <p><i>Artificers</i> <i>variously</i> <i>employed</i></p> <p>10. 53. Lacked.</p>
2						
3						
4						
5						
6	2	5	Nb <sup>h</sup>		4. ca	
7	2	5				
8	2	"	Nb <sup>h</sup>		3. —	
9	2	"	Nb <sup>h</sup>			
10	2	"	Nb <sup>h</sup>			
11	1	5	South			
12	3	"	Nb <sup>h</sup>	Nb <sup>h</sup>	4. C	

Course	S	Lat S <sup>h</sup>	Lat Ols	Long S <sup>h</sup>	Obs	Beatings & Distances
		5° 11' S	6° 10' S	3° 25' E		Badagey Nb <sup>h</sup> 21'

1	3	5	Nb <sup>h</sup>	Nb <sup>h</sup>	5. ca	<p><i>Alh.</i></p> <p>Employed <i>making</i> &amp; <i>mending</i></p> <p><i>Clothes</i> 2. 15 in <i>Koyals</i> &amp; 3 jib.</p> <p>3. 45 Ols? a sail on <i>Star</i> <i>beam</i>.</p> <p>4. 30 squared yds. <i>haul</i> <i>up</i> <i>8</i> <i>ft</i></p> <p>5. 15 Mustered at quarters. <i>Ex</i> <i>small</i></p> <p><i>arm</i> <i>men</i> 6. 20 Mustered sail &amp;</p> <p>came to <i>off</i> <i>days</i> in <i>10</i> fms. secured to</p> <p><i>top</i> <i>S. M. S. M. S.</i> <i>haul</i> <i>foot</i> <i>to</i></p> <p><i>haul</i> <i>Portuguese</i> <i>Schooner</i>.</p>
2	3	8				
3	3	8	Nb <sup>h</sup>			
4	3	2				
5						
6						
7						
8					4. C	
9						
10						
11						
12						

H. M. St. George's Mountains Lagos.

Date	Wind	Weather	Remarks July 1857.
Friday 4 <sup>th</sup>	West	4. oc.	A.M.
	West	5. c	Employed at General Quarters.
	West	6. c	P.M. Employed as requisite Saw shifting job from Mustered at Mess! Saw for Saw Mill.
Saturday 5 <sup>th</sup>	West	6. oc.	A.M.
	West	7. c	P.M. Employed scraping & guanoing Mess & Houses. Active in various employments. Employed as requisite Mustered at Quarters.
Sunday 6 <sup>th</sup>	West	7. c	A.M.
	West	8. c	P.M. Mustered at Quarters.
Monday 7 <sup>th</sup>	West	7. c	A.M.
	West	8. c	Employed as requisite.
	West	9. c	P.M. Completed Water in Tanks to 31 Hrs. Mustered at Quarters.



St. M. S<sup>t</sup> Sloop. Prometheus. Lagos.

Date	Wind	Weather	Remarks July 1851.
Sunday 8 <sup>th</sup>	West	7. Be	AM. Mustered at quarters shuffled Lou Lopez's yard for Exercise.
	W. S. W.	—	PM. Active in variously employed. Exercised Staffing 7 <sup>th</sup> forenoon.
	—	8. W.	Mustered at quarters. Exec. Small arm men.
Monday 9 <sup>th</sup>	W. S. W.	8. W.	AM. Mustered in Cable Obs. a sail to 8 <sup>th</sup> 10. 20. Prepared & made all plan sail.
	W. S. W.	7. E.	Exchanged 1 <sup>st</sup> with 11 <sup>th</sup> Sails. 9. 10. 20. Filled Mustered at quarters.
	W. S. W.	6. Be	10. 20. Mustered sail & crew to in 11 <sup>th</sup> forenoon to before.
	W. S. W.	5. Be	PM. "Sails" anchored. Filled sails. Mustered at quarters.

H	H	W	Course	Wind	Weather	Remarks July 18 <sup>th</sup> 1851 At Sea
1				West	8. Be	AM.
2						
3						9. 20. Mustered at quarters.
4						10. Prepared & made all plan sail to Head Sack. Sails in 10.
5						
6						10. 20. Prepared Royal yards set Royals.
7						
8						
9	2		1 W.			
10	2		—	West	4. Be	Non Quoin S. N. S. a 9 Miles.
Course	8	Lat S <sup>t</sup>	Lat Obs	Long S <sup>t</sup>	Obs	Bearings & Distances
1	3	2	W. S. W.	W. S. W.	2. Be	PM.
2	3	5				
3	3	5				Employed Making & Mending clothes.
4	2	5	W. S. W.	—	3. —	
5	3	5				3. 45. Lacked.
6	3	5				8. 20. Mustered at quarters.
7	3	2	W. S. W.	West	—	
8	3	2				Lacked Exec. Small arm men.
9	3	4	W. S. W.			6. Lagos True S. N. S. 9 Miles
10	3	4	W. S. W.			7. 20. Lacked. 12. Lacked.
11	3	4				
12	3	4				

H. M. S. Sloop Porpoise. At Sea.

#	16	10 <sup>5</sup>	Courses	Winds	Weather	Remarks
1	3	.	N <sup>W</sup> 1/2 S	Vble.	3. Bc	All.
2	3	.	N <sup>W</sup> 1/2 S			4. Tacked. 5. to Tacked. 6. to?
3	2	5	N <sup>W</sup> 1/2 S			the land & 2 vessels at anchor off
4	2	5	N <sup>W</sup> 1/2 S			Badagoy 7. 50 fathoms round.
5	1	5	N <sup>W</sup>			Entered at General quarters.
6	1	5	N <sup>W</sup>			10. to Tacked 6. to? 11. "Vigie"
7	1	5	N <sup>W</sup>			
8	1	5	N <sup>W</sup>			
9	1	5	N <sup>W</sup>			
10	1	5	N <sup>W</sup>			
11	1	5	N <sup>W</sup>			
12	2	5		N <sup>W</sup>	5 Bc	12. 3 vessels in sight at anchor

Course	5	Lat S <sup>h</sup>	Lat O <sup>h</sup>	Long S <sup>h</sup>	Wind	Bearings & Distances
						Mount Badagoy N <sup>W</sup> 10 Miles.

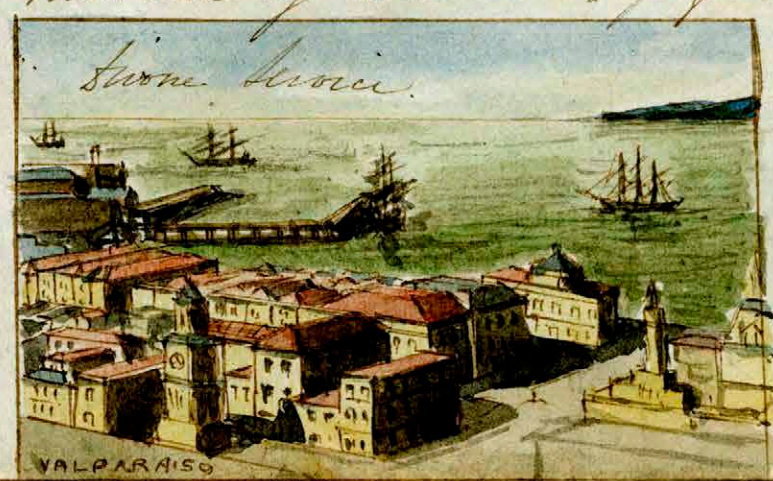
1	Running in for		N <sup>W</sup>	4 Bc	P <sup>h</sup> .	
2	Badagoy					Exchanged Pendant with "Vigie"
3						1. Tacked 2. 15 Masthead sails
4						came to off Badagoy in 9 fms with
5						1/2 bend to 1/2 fms & tacked sails
6			West	4 -		5. 18 Masthead at quarters.
7						6. Small arm men
8						
9						
10						
11						
12						Arrived at "Vigie"

Date Winds Weather Remarks July 1851. Badagoy.

Saturday 17 <sup>th</sup>	West	4. Bc	All.		Seven 1/2 Royal yards. Mast.
					& 1/2 fms.
	N <sup>W</sup>	3. c	P <sup>h</sup> .		Employed as requisite
					Employed as requisite
	N <sup>W</sup>	4. Bc			Masthead at quarters.

Sunday 18 <sup>th</sup>	N <sup>W</sup>	4. Bc	All.		Masthead by divisions & performed
-------------------------	----------------	-------	------	--	-----------------------------------

	N <sup>W</sup>	5. -	P <sup>h</sup> .		Swine Service.
	West	3 -			



U. S. Sloop Prometheus At Sea.

H	W	Course	Winds	Weather	Remarks
1			West	4. Be	At Sea.
2					
3					7 Mustered in Cable
4					9 Mustered at Quarters.
5					9. 30 Made all plan sail. Sailed
6					At 11.45 weighed &
7					set Mast studd & sails.
8					
9					
10					
11					
12					

Course	Lat S	Lat Obs	Long S	Time	Bearings & Distances.
					Mount Badagry S.W. 3 miles.

1			W. Sw	5. Be.	At Sea.
2	Reversing along the sand.				
3					Employed variously
4					8.30 Mustered at Quarters.
5					Received small amount being
6					Blank cartridge in All
7					studd & sails 7. 30 Mustered
8					sail & came to off logs with
9					SB in 8 fms secured to 60 fms.
10					
11					
12					

Date	Winds	Weather	Remarks	July 1881	Days.
Tuesday 16th	W	5. Be.	At Sea.		
	W Sw	4 -	At Sea.	7 Mustered at Quarters. from Mt. Top sail yard to reef. Received 100 lbs at Quarters.	
				Propped Mt. Top sail yard Mustered at Quarters.	
				Received shifting Top sail yards	

Date	Winds	Weather	Remarks	July 1881	Days.
Wednesday 17th	West	5. Be.	At Sea.		
	W Sw	5 -	At Sea.	Mustered at Quarters. Employed painting ship.	
				As in forenoon.	
	West	5 -		Mustered at Quarters.	

H. M. S. Hoop. Prometheus Lagos.

Date	Winds	Weather	Remarks July 1851.
Thursday 17 <sup>th</sup>	b'f	y. bc	Ab.
	West	—	pph.
	Wh	b. c	Ab.
Friday 18 <sup>th</sup>	b'f	b. c	Ab.
	West	b. bc	pph.
	Ab.	2. cc	Ab.

Employed restoring Fore Hold  
 Mustered at Quarters.  
 Employed painting Upper Deck.  
 As in forenoon.  
 Mustered at Quarters.  
 Received small amount.

Condemned & thrown overboard 18<sup>30</sup> lbs of  
 biscuit  
 Mustered at Quarters.  
 Employed painting.  
 Mustered at Quarters 10<sup>30</sup> till 12<sup>00</sup> Sampson  
 to West. 7. 45 Brought a blue light in answer  
 to one from Sampson 8. 45 Hoisted under  
 top sails & put in Sampson with Sampson  
 to 1<sup>st</sup> reef of top sails.

H	M	10 <sup>th</sup>	Course	Winds	Weather	Remarks July 19 <sup>th</sup> At Sea.	
1	1	5	South	b'f	2. bc	Ab.	
2	1	5					
3	1	5					
4	1	5					
5	1	5					
6	1	5					
7	1	5					
8	1	5					
9			Course to.				
10							
11							
12	1	5	N 2	—	—		
Course	S	Lat	44	Lat	46	Long	44
10 <sup>30</sup>	13 <sup>1</sup>			b'f		3. 58 8	
1	3	5	N 2	West	2. bc	pph.	
2	2	5	Ab. b				
3	1	5					
4	1	2					
5	1	8					
6	1	8	Ab. b				
7	1	5					
8	1	5					
9	1	2	W 1				
10	1	5	Wh				
11	1	5					
12	1	5					

Put up set job & Tarsal  
 Move to in Co with Sampson.  
 Land in sight  
 11 Up Mast & felled shifted top sails  
 11. 30 Tinnell Alt. 2 to 3.  
 parted Co from Sampson.  
 1. 45 Hauled to the head in Port  
 Deck.  
 Employed as opposite  
 5. 10 Mustered at Quarters  
 6. 30 Home.  
 8. 45 set Tarsal & Main Tarsal.

H. M. S. Hoop.

Prometheus

At Sea.

#	H	M	Course	Winds	Weather	Remarks Sunday July 28 <sup>th</sup>
1	1	4	SW	West	1. sun	AM.
2	1	4				
3			Calm			3.30 Hauled round to a breeze from South <sup>W</sup>
4	1	5	SW 1/2 S	SW	2. sun	3.40 Tack a back brace round
5	2	4	N & W			9.30 Mustered by Simmons & Opea lost head articles Ma.
6	1	8				1. Performed some Drills.
7	1	5	SW 1/2 W			
8	1	2				
9	1	5				
10	1	5	SW 1/2 S			11.15 set top gale sails Hoysals & Flying jib.
11	1	5				
12	1	8			3. Bce	

Course	S	Lat S <sup>th</sup>	Lat W <sup>th</sup>	Long S <sup>th</sup>	Chas	Beacons & Distances
--------	---	---------------------	---------------------	----------------------	------	---------------------

July 28 18<sup>th</sup> 6° 11' S 6° 5' W 3° 45' E 4° 15' E Days 264<sup>th</sup> 49'

1	2	5	SW	SW	2. Cal	PM.
2	2	3				
3	2	3				2.40 Ch <sup>?</sup> the land.
4	2	3				
5	2	4				
6	2	4	SW 1/2 W	SW 1/2 W		5.10 Mustered at Quarters.
7	2	5				
8	2	4				8.30 set top gale sails Hoysals & Flying jib.
9	1	5	S 1/2 W			
10	1	8				
11	2	4	South			
12	2	4			1. Bce	

#	H	M	Course	Winds	Weather	Remarks Monday July 29 <sup>th</sup>
---	---	---	--------	-------	---------	--------------------------------------

1	1	5	South	SW	2. Bce	AM.
2	1	2				
3	1	8	SW 1/2 S			5.30 Ch <sup>?</sup> the land & Bce & Alerts
4	1	5				one up M.
5	1	5				9.30 Mustered at Quarters shortened sail & Hoysals 9.30 filled
6	2	4	S 1/2 E			
7	2	4				
8	2	4				10.30 Hauled to the head on P. Jack
9	2	4				Made all plain sail Alerts a. O.
10	2	4	S 1/2 E			
11	1	4	SW 1/2 W	SW		
12	2	4				

Course	S	Lat S <sup>th</sup>	Lat W <sup>th</sup>	Long S <sup>th</sup>	Chas	Beacons & Distances
--------	---	---------------------	---------------------	----------------------	------	---------------------

July 29 12 6° 11' S 6° 15' W 3° 22' E 4° 4' E Days 274<sup>th</sup> 20 Miles

1	2	4	SW 1/2 W	SW	3. Bce	PM.
2	3	4				
3	1	6				1.30 Mustered sail & Hoysals
4	3	4				2.40 Filled Made sail.
5	3	4	SW 1/2 W			
6	3	4	S 1/2 E	SW 1/2 W		5.30 Lacked Mustered at Quarters.
7	1	5				Examined small arm men.
8	1	5				8.30 L & Signal set Main & Hoysals.
9	1	5				9.45 Filled Made sail parted
10	1	5				10.30 from Alerts set Hoysals & Jib.
11	2	4				
12	2	4				



H. M. S. Hoop. Promethium. At Sea.

H	W	W	Course	Winds	Weather	Remarks July 22 <sup>nd</sup> 1867.
1	2	.	S 1/2 E	Wh'k	3 Be	At.
2	2	.				
3	1	5				3. Tacked right. Land in sight
4	1	5	NW'k	---	---	4.40 let Hoysals & 3 jib.
5	1	5				
6	2	.				
7	2	.				9. Mustered at Quarters
8	2	.		W'k	---	Received extra duty men at Cullop
9	2	.				Sail
10	1	8				Employed as usual & repairs etc
11	2	5	NW	---	2 Be	
12	1	.				11.00 Tacked.

Course	8	Lat SK	Lat Obs	Long SK	Obs	Bearing & Distance
N 71/2 W	9	6° 12' S	6° 11' S	3° 48'	3° 52' E	Days NW'k 28.
1	2	5	South	W'k	3. Be	PM.
2	2	2				
3	2	5	NW'k			Received a specimen of Callipterus
4	3	.	NW'k			2. Tacked.
5	4	.	NW'k			
6	3	8	NW'k			
7	3	5				5.10 Mustered at Quarters
8	1	5	South	W'k	3. Be	Received at Cullop, Hull
9	3	.	1/2 E			
10	3	.				
11	3	.				7.40 Tacked.
12	2	5	---	---	2 a	

H	W	W	Course	Winds	Weather	Remarks Wednesday 23 <sup>rd</sup>
1	2	.	South	W'k	1. Be	At.
2	2	.				
3	2	8	NW'k			2. Tacked.
4	2	8				Sight. SW? the land.
5	2	8	NW'k			9. Mustered at Quarters.
6	2	8				Received specimens at Quarters.
7	2	8	NW'k	---	---	
8	2	5	NW'k			
9	2	4				
10	2	4				Artificers variously employed.
11	2	.				
12	2	.	---	---	---	

Course	8	Lat SK	Lat Obs	Long SK	Obs	Bearing & Distance
N 25/2 W	7	6° 12' S	6° 12' S	3° 26' E	3° 52' E	Days NW'k 29.
1	2	6	NW'k	W'k	1. Be	PM.
2	2	6				Employed as requisite.
3	3	.				5.10 Hoysals & 3 jib.
4	3	5	NW'k			
5	3	6	---	---	---	5.10 Mustered at Quarters.
6						Received at Cullop, Hull.
7				W'k	3	6. Mustered sail & came to with
8						NB in 12 fms secured to 60 fms
9						Tacked sails
10						
11						
12						

H. M. 1<sup>st</sup> Hosp. Portsmouth. At Sea.

#	H	Wt	Courses	Winds	Weather	Remarks July 24 <sup>th</sup> 1841.
1				N. W.	S. Bc	At Sea
2						
3						
4						7. Heighed & made all plain sail on Mast & Deck.
5						
6						
7						9.30 Mustered at Quarters.
8	3		S. W.	—	—	Tacked.
9	3					
10	2		N. W.			Examined after Quarters at gun side
11	3		N. W.			
12	2		—	—	—	

Courses	S	Lat. S <sup>th</sup>	Lat. Obs	Long. S <sup>th</sup>	Obs	Bearyng & Distance
			0° 17'		3° 44'	Days 164.4 20'

1	2	6	S. W. by W.	N. W.	2. Bc	P. M.
2	2	6	S. W.			
3	2	6				1. Tacked.
4	2	5	N. W. by S.			Employed Making & Mending clothes 3. Tacked.
5	3	5				5.30 Mustered at Quarters.
6	3	5	S. W. by S.	West	3. Bc	Examined at Cullops side
7						6.30 Made sail & came to anchor
8						At 12 pm wind to 8 pm. Tacked sail.
9						
10						
11						
12						

#	H	Wt	Courses	Winds	Weather	Remarks Friday 25 <sup>th</sup> .
1				West	2. Bc	At Sea
2						
3						
4						9. Examined at general Quarters
5						10. Lower 1/2 yards & Masts.
6						Pointed yards to the Wind.
7					3. Bc	
8						
9						11.15 Heighed & proceeded on the 2 <sup>nd</sup> ship of expansion for days.
10						
11						
12						

Courses	S	Lat. S <sup>th</sup>	Lat. Obs	Long. S <sup>th</sup>	Obs	Bearyng & Distance

1				West	4. Bc	P. M.
2						
3						1 <sup>st</sup> job done employed in getting job done.
4						4.25 Hunt fire down.
5						5. Stopped & came to 1/2 days in
6						6.30 fire wind to 6 pm. Put job done
7						8.30 Mustered at Quarters. Put
8						Remain up 1/2 Masts Cropped
9						Top Gall & Royal yards.
10						
11						
12						

H. M. S. Hoop. Pursueth. At sea.

H	M	15 <sup>th</sup>	Course	Winds	Weather	Remarks July 26 <sup>th</sup> 1857.
1				West	S. Be	At sea.
2						
3						I lost Pinnace away.
4						
5						
6						Employed as requisite
7				—	4—	
8						
9						Active in variously employed
10						
11						
12				—	—	

Course	S	Lat Sk	Lat Mo	Long Sk	Wind	Beaufort & Distance.

1				West	4. e	P.M.	
2							Employed as requisite
3							
4							
5							I had a sail to the West
6							
7				—	—		
8							Mustered at Quarter.
9							
10							Around the South steam of the
11							"Espadon".
12				—	—		

H	M	18 <sup>th</sup>	Course	Winds	Weather	Remarks Sunday 27 <sup>th</sup>
1				West	S. eq	At sea.
2						
3						Daylight I had the Pinnace
4						of the Mustered by Division
5						Performed some service.
6				—	—	
7						
8						
9						
10						
11				—	—	
12						

Course	S	Lat Sk	Lat Mo	Long Sk	Wind	Beaufort & Distance.

1				West	4. Be	P.M.	
2							
3							
4							Pinnace returned.
5							
6							
7				—	—		
8							I was Mustered at Quarter.
9							
10							
11							
12				At sea	2. e		

Date	Winds	Weather	Remarks July. 1851.
Monday 28 <sup>th</sup>	SW	1. co	AM.
			Sent Pinnac away.
	N. N. W.	3. Bca	AM.
			Employed tarring in & setting up of Iron rigging
	West	—	Employed as in forenoon. Mustered at quarters.
Tuesday 29 <sup>th</sup>	West	4. se	AM.
			Sent Iron yard down to reef
	N. N. W.	4. Bca	PM.
			Employed setting of yard & topmast rigging.
	West	4. cm	Employed as in forenoon of yard. set by top mast rigging Sailed French steam ship "Lepidon."
Wednesday 30 <sup>th</sup>	West	4. cm	AM.
			9 Mustered at quarters.
	N. N. W.	4. sp.	PM.
			9. 10 Ruffed & made sail to topsails in Mast Tack. Employed setting down rigging.
	West	4. Bca	2. Bca. Employed as in forenoon. 8. 10 Mustered at quarters shortened sail & came to anchor 10 in 11. 1/2 pm sent to 80 Sailed sails.
Thursday 31 <sup>st</sup>	N. N. W.	4. se	AM.
			Mustered at quarters.
	N. N. W.	4. Bca	PM.
			Employed rattring down rigging Artificers sawney employed.
	West	4. c.	Employed as in forenoon Pinnac returned to Pinnac.

Jc. M. S. Hoop. Prometheus. At sea.

#	H	W	Course	Winds	Weather	Remarks August 1 <sup>st</sup> 1857.
1				Vll	2. cl	1. 30 Packed made all plain sail 1. 30 Squared yards 9. Decided at General quarters 11. 50 Trimm'd
2						
3						
4						
5						
6						
7						
8	3	"	N	NW	2 oc	
9	3	"				
10	3	"				
11	4	"				
12	4	5		West	3. bc	

Course	H	Lat	Long	Day	Wind	Remarks
			5° 14' S			By the 2 days 118 1/2'
1	4	6	N 8. E	W. S	3. bc	1. Alter'd to East Trimm'd to Royal & 1 <sup>st</sup> jib. 5. 15 Muster'd at quarters. Decided shifting top sails. 8. 30 Baced up on Main's Lark.
2	3	2	East			
3	4	3	2° 5' S			
4	4	3				
5	3	5				
6	1	5	Wh. N. E	N. W		
7	2	6	W. N			
8	3	2	South			
9	4	"				
10	4	"	1 <sup>st</sup> N			
11	3	5				
12	3	5				

#	H	W	Course	Winds	Weather	Remarks Saturday 2 <sup>nd</sup>
1	3	"	W. N	W. S	4. bc	4. Packed. Employed as requisite Antifouling sauce by employed.
2	2	5				
3	2	5				
4	2	5				
5	2	5	N. N. W			
6	3	5				
7	3	5				
8	3	"	N. W. S	West	3. bc	
9	3	"				
10	3	"				
11	2	"				
12	2	"				

Course	H	Lat	Long	Day	Wind	Remarks
12 1/2	20	5° 57' S	5° 55' S	3. 34 2	3. 34 2	Days 115 1/2 51 Miles.
1	2	5	N. N. E	W. S	3. bc	2. Alter'd to North in Major 4. Cam'd away P. M. 1/2 by Backstay 5. 15 Muster'd at quarters. 5. 30 Tacked in Top Gall sails 1 <sup>st</sup> jib let down jib.
2	2	5				
3	4	"	North			
4	3	8				
5	4	2	N. W. S			
6	3	2	W. N	West	4. bc	
7	2	"				
8	2	"	W. N			
9	2	"				
10	2	"	1 <sup>st</sup> N			
11	2	"				
12	2	"				

H. M. S. Hoop. Prometheus At Sea.

#	H	M	Course	Winds	Weather	Remarks
1	2	6	S. W.	W. Str	2. Bc	Atk.
2	2	6				
3	2	6				4. Tacked
4	2	6				
5	2	5	N. W. S.			5. Obs. the Land.
6	2	5				
7	2	5				6. 30 Mustered by Division
8	2	5				
9	2	5	N. W. S.			Performed Divine Service.
10	3	6				
11	1	5				
12	1	6				

Course	S	Lat S <sup>th</sup>	Lat Obs	Long S <sup>th</sup>	Chas	Bearing & Distance
N. W. S.	18'	5. 5. S.	5. 15. S.	5. 13. E.	3. 36 E.	Land S. 49. W. 10 Miles.

1	2	5	N. W. S.	West	5 Bc	P. M.
2	3	6				
3	1	6				2. 20 Row up 2 <sup>nd</sup> in Mt. Sycamore
4	2	5	S. S. E.			3. Muzer
5	4	6	S. S. E.			
6	1	6				5. 10 Mustered at quarters
7	2	6	S. W. S.			to the Wind on Starboard Tack
8	2	5	Str			at Mt. Sycamore & Muzer
9	3	6				
10	2	5				
11	2	5				
12	2	5	S. W. S.			

#	H	M	Course	Winds	Weather	Remarks
1	3	5	S. W. S.	West	4. Bc	Atk.
2	5	5				
3	3	5				4. Tacked
4	3	6				
5	2	5	Str			6. Mustered at quarters
6	2	6				
7	1	5	N. W. S.	W. S.	5. —	set up fall sails.
8	1	5				
9	1	5				
10	2	5				Employed seriously
11	2	5	N. W. S.			
12	2	5			2. —	

Course	S	Lat S <sup>th</sup>	Lat Obs	Long S <sup>th</sup>	Chas	Bearing & Distance
S. W. S.	28'	5. 55. S.	5. 55. S.	5. 36. E.	3. 51. E.	Land S. 47. W. 2.5 Miles.

1	2	6	N. W. S.	W. S.	2. Bc	P. M.
2	2	5				
3	2	5				1. Let Hoyle & 1st.
4	3	6				Embarked upon Mt. Sycamore
5	3	6				
6	3	6		West	3. —	5. 10 Mustered at quarters.
7	3	5				Observed small air men.
8	4	6				
9	3	5	N. W. S.			5. 40 Exercised Cos. of Boats & Capt.
10	1	6	S. W.			11 Guns firing at a target with shells
11	3	6				
12	5	5	S. W.			6. 10 Tacked in Hoyle & 1st.

H. M. S. Hoop. Pomeroon. At Sea.

#	H	Vol	Course	Winds	Weather	Remarks August 5 <sup>th</sup> 1857.
1	3	.	S 1/2 W	h 1/2	S. Bc	At.
2	3	.				
3	3	.				4. Tacked.
4	3	.				6. Let Hoys etc. & 7. jib.
5	3	.	S 1/2 W			9. Masted at quarters.
6	3	5				
7	3	6				
8	3	5				Renewed Foremast & Quarters.
9	3	5	S 1/2 W			
10	3	5				
11	3	5				10. Obs. the land on the bow.
12	3	5			4. Bc	

Course	Lat	Long	Wind	Bar	Therm	Remarks & Distances
S 1/2 W	20	8° 13' N	6° 15' E	3. 23	3. 48. 8	Lagos 46° 1/2 26 Miles.

1	3	5	S 1/2 W	h 1/2	S. Bc	At.
2	3	5				
3	1	5	S 1/2 W			2. So Tacked.
4	2	5				
5	1	5	S 1/2 W			4. So Tacked.
6	2	5				
7	2	5				5. So Masted at Quarters.
8	2	5	S 1/2 W			Renewed shuffling topsails
9	2	5				
10	1	.	S 1/2 W	4. Bc		6. So Tacked. 9. 15. Tacked
11	2	.	S 1/2 W			
12	2	.				11. Tacked in Hoys etc. & 7. jib.

#	H	Vol	Course	Winds	Weather	Remarks Wednesday 6 <sup>th</sup>
1	3	5	S 1/2 W	h 1/2	S. Bc	At.
2	4	.				4. So Bc
3	4	.				9. Masted at Quarters
4	4	5				
5	2	.	S 1/2 W	h 1/2		Renewed Quarters Deck Quarters
6	3	.				Obs. 2 sail on W. Bc
7	3	.				13. 30. Shipped floater Masted
8	3	.				sail
9	2	5				
10	2	5				
11	2	.				
12	1	.	S 1/2 W			11. 40. Proceeded on new ship

Course	Lat	Long	Wind	Bar	Therm	Remarks & Distances
S 1/2 W	12	8° 20' N	6° 16' E	3. 38. 8	3. 58. 8	Lagos 46° 30' 12. 1'

1	6	.	S 1/2 W	h 1/2	S. Bc	At.
2	5	.				
3		.				1. 30. Stopped alongside Sampson
4		.				Made sail & hove to but tacked
5		.				has both renewed provisions
6	5	5	S 1/2 W			from Masted Masted &
7	5	5				fresh sail
8	5	5				
9	5	5				8. 45. Proceeded on down
10	5	5				
11	5	5				
12	5	5				S. J. Hoys etc. jibs.

St. M. S. Hoop. Promethium At Sea.

H	H	W <sup>th</sup>	Course	Winds	Weather	Remarks August 7 <sup>th</sup> 1861.
1	5	5	W <sup>th</sup>	West	S. Be	All. Capt. Ob. Niger & Flying jib" 5.30 Stopped the "Sampson" & "Alecto" copied 1/2 h. yards made sail & from to the 8 <sup>th</sup> Jack. Ob. "Karlgen" & set jib.
2	5	5				
3	5	5				
4	5	5				
5	5	5				
6						
7						
8	None					
9						
10						
11						
12						

Course	+	Lat S <sup>th</sup>	Lat Obs	Long S <sup>th</sup>	Obs	Bearings & Distances
W <sup>th</sup>	62		5.7 S	3	3° 5' 8"	Porto Novo 11.4.16'

1				W <sup>th</sup>	4. Be	P.M. 2. "Alecto" parted co. employed supplying "Karlgen" with Coal. 3.40 Niger and "Karlgen" parted co. 12. Tilled & made sail part Co. from "Sampson" & Flying jib.
2						
3						
4						
5	None					
6						
7						
8						
9						
10						
11						
12						

H	H	W <sup>th</sup>	Course	Winds	Weather	Remarks Friday 8 <sup>th</sup>
1	3	.	South	W <sup>th</sup>	S. Be	All. 9. Arrived at General Quarters. 10.30 Cropped Royal yards at Keyes. Sufficient reasons employed.
2	3	"				
3	3	4				
4	3	5				
5	3	6				
6	4	.				
7	4	"				
8	4	"	S. 8	W <sup>th</sup>	4. —	
9	3	2	S. 8			
10	3	2	S. 8			
11	3	2				
12	3	5	S. 8		S. C.	

Course	+	Lat S <sup>th</sup>	Lat Obs	Long S <sup>th</sup>	Obs	Bearings & Distances
S. 8	46	1° 33' N	1° 56' S	2° 52' 8"	3° 12' 8"	Cape Samosa 18.8.196'

1	3	5	S. 8	W. S. W.	3 Be	P.M. Employed as requested 8.30 Parted of Quarters. Received small arm men 6.30 set Sea Top the "Widdow" sail & Mr. Top Mr. stay and
2	3	5				
3	3	2				
4	3	5				
5	4	.				
6	4	2				
7	4	4				
8	5	.				
9	3	5				
10	3	5				
11	3	8				
12	3	.				



			H.	M.	S.	Wind	Weather	Remarks
			Course			At Sea.		August 9 <sup>th</sup> 1867
1	4	"	S. 8	W. 1/2	S. 1/2	At.		
2	4	5						
3	5	5						
4	5	5						8. Attended course. Tumbled
5	4	"						1. set down. Studed sail
6	4	"						
7	4	1						
8	4	8						Employed as requisite
9	4	5	S. 8					
10	4	"						
11	4	"						Studied up in my S. sail
12	3	5						

Course	S.	Lat. 5k	Lat. Obs	Long. 5k	Obs.	Bearings & Distances
S. 2. 8	103	4. 19. 8	4. 32. 8	4. 8. 8	4. 33. 8	Cape Horn S. 8. 100.
1	3	5	S. 8	W. 1/2	S. 1/2	At.
2	3	2				
3	3	8				
4	3	6				
5	3	6				
6	3	6				
7	3	"				
8	2	5				
9	3	"	S. 8			
10	3	"				
11	3	5				
12	3	5				

			H.	M.	S.	Wind	Weather	Remarks
			Course			Sunday 10 <sup>th</sup>		
1	3	5	S. 8	W. 1/2	S. 1/2	At.		
2	3	6						2. In down. Studed sail hand up.
3	3	6						6. Obs. the land on Pt. beam.
4	3	5						9. to Mustered by Division &
5	3	2						Perf. with some noise
6	3	6						
7	2	6						
8	1	5						
9	1	8						11. Tumbled set down. Studed sail
10	1	8						
11	1	8						
12	1	5		W. 1/2	2. 1/2			

Course	S.	Lat. 5k	Lat. Obs	Long. 5k	Obs.	Bearings & Distances
S. 7. 8	83	5. 54. 8	4. 0. 8	5. 30. 8	5. 50. 8	Cape Buller Towards P. S. 8. 175.
1	2	5	S. 8	West	2. 1/2	At.
2	3	2				
3	3	"				
4	3	2				
5	3	2				
6	3	5				
7	4	"				
8	4	"	S. 8	W. 1/2	3. 1/2	
9	4	"				
10	4	"				
11	4	"				
12	5	"				

H. No. 1<sup>st</sup> Hoop. From Athens At Sea.

#	H	10 <sup>th</sup>	Course	Winds	Weather	Remarks
1	4	8	N 1/2 E	N 1/2 W	S. cy.	At Sea.
2	4	8				
3	4	5				
4	5	4				7.30 to Hoop also 1/2 pt.
5	5	4				
6	5	4				1. Attended course to E. S. S.
7	4	5				
8	4	5				
9	4	4	S 1/2 E			9. Mustered at quarters.
10	4	4				
11	4	4				
12	3	5				10.30 Swimed to Hoop full sails.

Course	S	Lat. S. N	Lat. W. E	Long. S. N	Wind	Bearing & Distance
N 1/2 E	98	3° 34' N		7° 26' W		C. Bullin. Sumando P. 11. 1/2 79!

1	1	5	S 1/2 E	N 1/2 W	S. oc.	P. M.
2	2	8	East			
3	3	4				12.30. Attended course to East.
4	3	4				
5	3	5				5. Obs. the land on Starboard.
6	3	8				
7	3	5				8.10 Mustered at quarters & dismissed at Cullop's side.
8	4	4				
9	3	4	S. S.			
10	3	4				
11	2	5				1.10 Attended course up Sound.
12	3	2				

#	H	10 <sup>th</sup>	Course	Winds	Weather	Remarks
1	3	2	S. S.	N 1/2 W	S. c.	At Sea.
2						
3			W. to			7.30. Hoop set & hoisted & spunked
4						1. Hauled to the Wind on S. Tack & W. to. 4. Hoop set 1/2 sails hoisted
5	4	4	S. S.			2. I was out & set Starboard Studed sails
6	4	6				Hoop also & the 1/2 Hoop set
7	3	6				9. Mustered at quarters in Starboard
8	3	5				Shipped floater got clear up & started
9	2	5	S 1/2 E		S. seen	1. Hoop set & proceeded.
10	2	4	South			
11	2	4				
12	5	4	S. W.			

Course	S	Lat. S. N	Lat. W. E	Long. S. N	Wind	Bearing & Distance
N 1/2 E	80	3° 57' N	4° 1' S	8° 24' W	S° 41' E	Clarence Cove Sumando P. 11. 1/2 16'

1			Heaving in for	Calm	S. oc.	P. M.
2			Sumando P.			
3						2.30. Stopped & came to in
4						Clarence Cove with (S. S.) in 1/2 pt.
5						Went to Hoop got a hauler
6						in show & hauled in for
7						Coasting
8						
9						
10						
11						
12						Out Pursued & Reddle Nos Boats.

H. M. S. Sloop Prometheus. Serrano P.

Date	Winds	Weather	Remarks
Wednesday 13 <sup>th</sup>	Calm	o. bc	All.
	W. S. W.	4. bc	P.M.
			As in former.
Thursday 14 <sup>th</sup>	Calm	o. bc	All.
	W. S. W.	4. bc	P.M.
			Employed Coaling & Watering.

H	W	Course	Winds	Weather	Remarks
1			North	2. bc	All.
2					
3					
4					Employed Coaling & Watering
5					
6			W. S. W.	3. bc	
7					
8					Set up life buoy for trial.
9					
10					
11					
12					

Course	Lat S	Lat Obs	Long S	Time	Bearings & Distances
1					
2					
3					
4					Employed coaling & Watering
5					
6					Completed Coal & Water
7					
8					
9					
10					
11					
12					

St. M. S. Hoop      Plover      At Sea.

#	R	10 <sup>th</sup>	Course	Winds	Weather	Remarks August 16 <sup>th</sup> 1851.
1				SW	4. se.	At.
2						
3						
4						2. East of the Narrows
5						2. 15 Mighted & proceeded on the
6						2 <sup>nd</sup> Step of Expansion.
7						
8				-	7. e	Sight. W. of the Cameron Mountain
9						& Suba Island
10						
11						2. 15 Came to off Columbia in 5 fms with
12					7. W	13.5 secured to 40 fms. Landed said

Course	S	Lat S <sup>th</sup>	Lat Obs.	Long S <sup>th</sup>	Obs	Bearings & Distances
--------	---	---------------------	----------	----------------------	-----	----------------------

1				SW	7. Be	PM.
2						
3						
4						5. Tumbled sails.
5						
6						5. 45 Mighted & set Mizen
7	3		SW	W SW	5. e	6. 30 proceeded on the 2 <sup>nd</sup> Step
8	6		SW			of Expansion 7. set Taysails
9	6					8 set jibs. 8. 40 to Taysails & jibs.
10	6					
11	6					
12	6				4. e	

#	R	10 <sup>th</sup>	Course	Winds	Weather	Remarks Sunday 17 <sup>th</sup>
1	6	5	SW	W SW	3. e	At.
2	6	5				
3	6	5				
4	6	5				3. 45. set Fore & M <sup>st</sup> sails.
5	6	5				
6	6	5				
7	6	5				9. 50 Mustered by Simons
8	7	5				& performed swim service
9	7	5				
10	3	5	SW			
11	6					
12	6					

Course	S	Lat S <sup>th</sup>	Lat Obs.	Long S <sup>th</sup>	Obs	Bearings & Distances
--------	---	---------------------	----------	----------------------	-----	----------------------

119.5	121	2.9.4	2.1.4	8.55.8	8.47.8	Cape Lopez 13.8 157.
1	6		SW	W SW	4. e	PM.
2	6					
3	6					
4	6					
5	6					
6	6			SW	3. se	5. 15 Mustered at Quanties.
7	6					
8	6					
9	6					
10	6					
11	6					
12	6					

St. M. S. Hoop. Prometheus. At Sea.

#	h	10 <sup>h</sup>	Course	Winds	Weather	Remarks August 18 <sup>th</sup> 1851.
1	6	.	SW	SW	2. cc	At.
2	6	.				
3	6	.				
4	6	.				9. Mustered at quarters.
5	8	8				Employed cleaning After Hold.
6	8	8				
7	5	5	—	SW	1—	
8	5	5				
9	5	5				
10	5	5				Artificer variously employed.
11	5	5				
12	5	5	—	—	—	

Course	h	Lat S <sup>th</sup>	Lat Obs.	Long S <sup>th</sup>	Long Obs.	Bearing & Distance
N 6 <sup>th</sup> W	139	0° 19' S	0° 17' S	7° 40' E	7° 33' E	Cape Lopez 127 E 22'

1	6	.	South	SW	2. cc	PM.
2	6	.				
3	6	.				3. 1/2 the land on P. side.
4	6	.				
5	5	5	—	—	—	4. Shifted Torsail
6	5	5				
7	5	5				5. 1/2 Mustered at quarters.
8	5	5				
9	6	.	SW S	—	—	Secured small new men
10	6	.				
11	6	.				6. to Cape Lopez 118 E 15 a 11 Miles.
12	6	.	—	Calm	8—	

#	h	10 <sup>h</sup>	Course	Winds	Weather	Remarks Sunday 19 <sup>th</sup>
1	6	.	SW S	SW	3. Bce	At.
2	5	5	SW			
3	5	5				7. Set 3rd Torsail
4	5	5				
5	5	5				9. Mustered at quarters.
6	3	4	SW	—	2—	
7	3	4	SW	—	2—	Secured a division of Cullaps
8	6	.				dull
9	5	5	SW			
10	5	5				
11	5	5				
12	5	5	—	—	—	Carpenter repairing Cullaps

Course	h	Lat S <sup>th</sup>	Lat Obs.	Long S <sup>th</sup>	Obs	Bearing & Distance
N 4 <sup>th</sup> E	125	2° 21' S	2° 19' S	7° 10' E	7° 5' E	S. Paul de Islands 133 E 460'

1	6	.	SW	South	2. cc	PM.
2	6	.				
3	6	.				Spent Coaling duck & soap
4	6	.				to Ships etc
5	5	5	—	—	—	
6	5	5				
7	5	5				5. 1/2 Mustered at quarters.
8	5	5				
9	6	.	SW	—	1—	Secured at Cullaps duck
10	6	.				
11	6	.				
12	6	.	—	—	—	8. Alter course to S. E.

St. M. 1<sup>st</sup> Hosp. Prom. Thru. At Sea.

#	H	Vol	Course	Winds	Weather	Remarks August 20 <sup>th</sup> 1764
1	6	.	S <sup>W</sup>	South	1. cl.	A.M.
2	6	.				
3	6	.				
4	6	.				
5	5	5	—	—	3. cl.	9. Mustered at quarters.
6	5	5	—	—		Received Linnel at quarters
7	5	5				
8	5	5				
9	5	5	S <sup>W</sup>	—	—	
10	5	5				Carpenter up. Cutty.
11	5	.				
12	5	.			4. —	

Course	S	Lat S <sup>th</sup>	Lat Ob.	Long S <sup>th</sup>	Chis	Bearing & Distance.
134 <sup>o</sup> 8	127	4 <sup>o</sup> 51'S	4 <sup>o</sup> 41'S	10 <sup>o</sup> 28'W	10 <sup>o</sup> 18'W	N. Paul de Loanda 132 <sup>o</sup> 8 33 <sup>o</sup> 4
1	6	.	S <sup>W</sup>	S <sup>W</sup>	2. Ben.	A.M.
2	6	.				
3	6	.				
4	6	.	—	—	—	
5	6	.				
6	6	.				
7	5	5	—	—	—	
8	5	5	—	—	—	
9	6	.				
10	6	.				
11	6	.				
12	6	.				

#	H	Vol	Course	Winds	Weather	Remarks Thursday 21 <sup>st</sup>
1	5	5	S <sup>W</sup>	S <sup>W</sup>	3. cl.	A.M.
2	5	5				
3	6	.				
4	6	.				
5	5	5	—	S <sup>W</sup>	—	
6	6	.				
7	5	5	—	—	—	
8	5	5				
9	5	5	S <sup>W</sup>	S <sup>W</sup>	—	
10	5	5				
11	7	.				
12	7	.			cod.	

Course	S	Lat S <sup>th</sup>	Lat Ob.	Long S <sup>th</sup>	Chis	Bearing & Distance
140 <sup>o</sup> 8	134	5 <sup>o</sup> 46'S		11 <sup>o</sup> 52'W	11 <sup>o</sup> 41'W	N. Paul de Loanda 127 <sup>o</sup> 8 20 <sup>o</sup> 4
1	7	.	S <sup>W</sup>	South	3. cf.	P.M.
2	7	.				
3	7	.				
4	7	.				
5	7	.	—	—	—	
6	7	.				
7	7	.				
8	7	.				
9	6	5	South	S <sup>W</sup>	1. —	
10	6	5				
11	6	5				
12	6	5				

St. M. S. Hoop. Prometheus. At Sea.

#	H	10 <sup>th</sup>	Course	Winds	Weather	Remarks August 22 <sup>nd</sup> 1857.
1	6	5	South	Calm	s. f.d.	At.
2	6	5				
3	6	5				
4	6	5				g. Mustard at Quarter No.?
5	6	5				the land on P. beam.
6	6	5				
7	6	5	W.S.	—	—	
8	6	5				Sounded at Great Gun dull
9	6	5				
10	6	4	South	—	—	
11	6	4				Artificers variously employed.
12	6	4			B. m.	

Course	S	Lat. S <sup>th</sup>	Lat. N <sup>th</sup>	Long. S <sup>th</sup>	Mag	Bearings & Distances
106.8	150.	8.2.8	8.8.1	12.5.7.8	12.48.8	S. Paul de Loanda 127.8 S. 1.

1	7	5	South	2. B. m.	P. M.	
2	7	5				Employed as requisite
3	7	5				4. Made all plain sail
4	7	5				
5	7	5				5.6 Mustard at Quarter No.?
6	7	5				Land on P. East 7 miles. See?
7	7	5				small cum mer. shortened & parted
8	7	5				sails 7.50 No. the lights & the tower
9	7	5				stopped & came to off S. Paul de
10	7	5				Loanda with B. m. 12 fms. secured to 4 <sup>th</sup>
11	7	5				
12	7	5	At anchor			

#	H	10 <sup>th</sup>	Course	Winds	Weather	Remarks Saturday 23 <sup>rd</sup>
1				Calm	s. c	At.
2						
3						Wighed & shifted South close
4						in for Coaling
5						
6			W.S.	3. B. m.		Out Paddle for boats.
7						
8						
9						
10						Employed coaling.
11						
12						

Course	S	Lat. S <sup>th</sup>	Lat. N <sup>th</sup>	Long. S <sup>th</sup>	Mag	Bearings & Distances

1				Sh	1. m	P. M.
2						
3						
4						
5						
6						
7						
8				Calm	0	
9						
10						
11						
12						

Employed coaling ship.





H. M. S. Hoop. Prometheus. S<sup>t</sup> Paul de Loando.

Date	Winds	Weather	Remarks August 1851.
Friday 29 <sup>th</sup>	Calm	s. Be	A.M.
	W. W.	s. —	Employed as most requisite Artificer variously employed
			P.M.
	Calm	s. e	Employed as requisite
Saturday 30 <sup>th</sup>	Calm	s. —	A.M.
	W.	s. Be	P.M.
	Calm	s. Be	Employed as most requisite Arrived H.M.S. "Porpoise" bearing the head pendant of Commodore Bruce Employed as requisite.
Sunday 31 <sup>st</sup>	Calm	s. Be	A.M.
	W.	s. Be	P.M.
	Calm	s. Be	Mustered by divisions & performed Swearing Service. Parade returned. Hauled up Boats.
Monday 1 <sup>st</sup> Sept.	Calm	s. e	A.M.
	W. W.	s. Be	P.M.
	Calm	s. —	Commodore Bruce came on board to inspect ship Inspected & discussed small arms & artillery men & at general quarters firing at a target. Commodore left the ship. In P.M. Hauled up Boats. Hoisted Royal yards.

St. M. S. Hoop. Pomethens. At Sea.

H	T	W	Courses	Winds	Weather	Remarks
1				Calm	s. ce	<p>At Sea.</p> <p>Employed every hand to sail gear.</p> <p>Proceeded from St. M. S. "Pomethens".</p>
2						
3						
4						
5						
6						
7						
8						
9						
10						
11						
12						

Course	S	Lat S	Lat W	Long S	Chas	Bearing & Distance
1					W. S.	<p>1. to 10 o'clock &amp; made all plain sail &amp; hauled to the wind in P. Tack.</p> <p>4. Cape Logatas. 4.30 from St. M. S.</p> <p>5. to Mustard at Quarter.</p> <p>11. 45 to St. M. S. St. Mary's.</p>
2						
3						
4						
5	2	6	W. S.	W. S.	2. B. C.	
6	2	6				
7	2	6				
8	1	8				
9	2	5				
10	2	5				
11	4	5				
12	4	5				

H	T	W	Courses	Winds	Weather	Remarks
1				Calm	s. ce	<p>At Sea.</p> <p>Day 11. 11.30 sail.</p> <p>7. Hauled up on P. Tack to the land in P. Tack to repair.</p> <p>9. Mustard at Quarter.</p> <p>Employed as requisite.</p>
2						
3						
4						
5						
6						
7						
8						
9						
10						
11						
12						

Course	S	Lat S	Lat W	Long S	Chas	Bearing & Distance
W. S.	W.	S. 44. S	S. 40. S	13. 28	12. 58. 2	Cape Logatas S 76. W 22.
1						<p>1. 11.30 sail W.</p> <p>2. to 12. 15. Proceeded in Chas.</p> <p>4. Dischargedendants with 1000 lbs of Copper. 4. 50 Stopped alongside Copper. removed courses close dispatches &amp; proceeded for St. Paul de Loanda.</p> <p>Sailed sail 5. 15 Stopped alongside "Pomethens" 5. 15 Came to in 12 fms south.</p>
2						
3						
4						
5						
6						
7						
8						
9						
10						
11						
12						



St. M. S. Ship. Instruments. At Sea

#	H	M	Course	Winds	Weather	Remarks
1						
2	4 <sup>30</sup>		from SW	S. S	1. c	Alt.
3		5	18.			6. 15 Proceeded on the 2 <sup>nd</sup> step with saw boiler.
4						
5		5	Wh. W.			
6		5				7. 30 Wh? laid on 1 <sup>st</sup> bar.
7	5	5	S 18			
8	5	5				Employed as requested
9	5	5	W. S	Calm	s. c	
10	5	5				
11	5	5	S 18 1/2			Wh? Cape S. Seas. East.
12	5	5				

Course	S	Lat SK	Lat No	Long SK	Chas	Beaufort & Distance.
S 18 S	55	16. 12 S	16. 16 S	13. 21 S	13. 16 S	C. S. Seas. 18 S Old Keyhole N. S.
1	5	5	18 1/2 S	South	1. Bca	PM.
2	5	5				
3	5	5	South			2. 30 Wh? a sail on Starboard
4	6		W			Attended to in chase set job & Iron Tug. out.
5	6		W			
6	1	5				
7	4		W 18			4. 40 Wh a Patagonian by an tow of wa
8						
9						5. 40 Mustered at Quarter sent steam Cable. 6. 40 Stopped & came to with steam in 27 fms ahead 5 1/2 fms.
10						
11			At Anchor			
12				Calm	s. Bca	

#	H	M	Course	Winds	Weather	Remarks
1						
2						
3						
4			At Anchor			7. 30 Hushed & proceeded on the 4 <sup>th</sup> step of expansion.
5						Mustered by division & passed down river
6						
7	1		W			
8	4					
9	4					10. 40 Wh? to the West a small vessel seen & land in sight from S 18 to W.
10	4					
11	3		W			
12	5					

Course	S	Lat SK	Lat No	Long SK	Chas	Beaufort & Distance
W 18	44	16. 58 S	16. 52 S	13. 20 S	13. 23 S	Guacumbos 142.8 37'
1	4		W		1. Bca	PM.
2	4	5				
3	4	5				12. 15 Stopped & boarded a small Patagonian schooner
4	5					
5	4	5				12. 30 W. B. at & proceeded.
6	2					1. 15 Wh? spread 1 <sup>st</sup> top sail & 1 <sup>st</sup> sail
7	3		S 18		Calm	s. oc
8						5. 40 Mustered at Quarter.
9						Shortened & lashed sails.
10						7. 40 Stopped & came to with steam
11			At Anchor			of Ross Redonda in 20 fms ahead to 1/2 fms
12				Calm	s. c	

H. M. 1<sup>st</sup> Hoop. Pomegranates. At Sea.

#	H	10 <sup>th</sup>	Courses	Winds	Weather	Remarks Sep. 1 <sup>st</sup> 8 <sup>th</sup> 1851.
1				Calm	o. bc.	At Sea.
2						
3						
4						
5						
6						
7						
8						
9	3		W. W.	—	—	8. 30 Made all plain sail & stood back
10	6					9. 30 Mustered at Quarters. Obs. sail to be 1/2 the Bay "Round"
11	5		W. S.			Examined a division of Cuttop Men
12	3		W. S.	—	—	11. 45 Stopped alongside "Round."

Course	S	Lat. S <sup>th</sup>	Lat. W <sup>th</sup>	Long. S <sup>th</sup>	Obs	Bearing & Distance
160h	17	11° 26' S	11° 21' S	13° 58' W		S. Philip de Buzuela 110h 7 1/2'

#	H	10 <sup>th</sup>	Courses	Winds	Weather	Remarks
1				Calm	o. c.	At Sea.
2	1	5	W.	N. W.	2. Bc.	
3	3					
4	3					
5		5	W. S.	—	—	
6						8. 10 Mustered at Quarters.
7			⊕	Calm	o.	Examined the all arm men & shifting 1/2 on top sail
8						7. 30 Mustered & I sailed sails.
9	2		W. W.	—	—	9. 30 Proceeded on 1/2 the ship pointed to from "Round."
10	4					
11	4			South	2. i.	
12	4					

#	H	10 <sup>th</sup>	Courses	Winds	Weather	Remarks Tuesday 9 <sup>th</sup>
1	2		W. W.	South	2. Bc.	
2	4					
3	4					9. Mustered at Quarters.
4	4					
5	4	5	—			10. 2 <sup>nd</sup> division of Cuttop Men.
6	4	5				Shifted jib.
7	4	5		Calm	o. cu.	Employed cleaning Bread room
8	4	5	W.			10. 30 Obs. the Land.
9	3		W.			
10	3		W.			
11	3					
12	6					S. Philip's Boat 10.

Course	S	Lat. S <sup>th</sup>	Lat. W <sup>th</sup>	Long. S <sup>th</sup>	Obs	Bearing & Distance
160h	82	12° 26' S	12° 26' S	13° 8' W	12° 58' W	San Pedro Elephant Bay 160h 48'

#	H	10 <sup>th</sup>	Courses	Winds	Weather	Remarks
1	6		W.	N. W.	2. Bc.	At Sea.
2	6					
3	6		W. S.			1. 1st 1/2 of sail I sawal top sail 1/2 sail & Royal.
4	6					
5	6	5				3. 45 Mustered & I sailed sails.
6	6	5				
7						5. 10 Mustered at Quarters.
8						9. Came to in Elephant Bay with 1/2 B. in 12 fms. used to 36 fms.
9						
10						
11						
12						

H. M. 1<sup>st</sup> Voy. Prometheus. Elephant Bay.

#	H	Vol.	Courses	Winds	Weather	Remarks Sep <sup>r</sup> 10 <sup>th</sup> 1851
1				Calm	S. Bc	At.
2						
3						
4						
5						
6						
7				—	—	Employed as requisite
8						
9						
10						
11						
12				West	S. Bc	

Courses	S	Lat S <sup>th</sup>	Lat W <sup>th</sup>	Long S <sup>th</sup>	Obs	Bearings & Distances
---------	---	---------------------	---------------------	----------------------	-----	----------------------

1				West	S. Bc	PM.
2						
3						
4						Employed as requisite
5						
6				—	2 —	
7						
8						
9						Went by boat.
10						
11						
12				Calm	S. —	

H. M. 1<sup>st</sup> Voy. Prometheus. Elephant Bay. Thursday 11<sup>th</sup>

#	H	Vol.	Courses	Winds	Weather	Remarks Thursday 11 <sup>th</sup>
1				Calm	S. Bc	At.
2						
3						
4						Out Pinnac
5						
6				West	2. B.	
7						
8						Employed as requisite
9						
10						
11						Shoemaker repairing job.
12				—	S. Bc	

Courses	S	Lat S <sup>th</sup>	Lat W <sup>th</sup>	Long S <sup>th</sup>	Obs	Bearings & Distances
---------	---	---------------------	---------------------	----------------------	-----	----------------------

1				Dr	S. Bc	PM.
2						
3						
4						S. sent Pinnac away in charge of Lieut Graham.
5	2	5	W. S. W.	—	—	
6	2	5				S. 10 weighed & made all plain sail
7	2	5	W. S. W.			Shipton Mr. G. sail
8	2	5	W. S. W.	W. S. W.	S. —	
9	2	5	W. S. W.			
10	2	5	W. S. W.			
11	2	4				S. 10 Mustered at quarters.
12	2	4				

H. M. S. *Utopia* Permethers. At sea.

#	W	10 <sup>th</sup>	Course	Winds	Weather	Remarks Sep <sup>r</sup> 12 <sup>th</sup> 1881.
1	"	5	h. S	Vll	1. Be	AM.
2	"	5	h. S	Vll	1. Be	AM.
3	1	"	West	—	—	Say " Oh? the land.
4	1	"	—	—	—	g. Mustard at quarters.
5	1	"	—	—	—	Examined After Quarters at
6	1	"	—	—	—	gun dull.
7	1	"	—	—	—	—
8	1	5	West	Cal	0.	—
9	1	2	—	Vll	1	—
10	1	"	—	—	—	—
11	1	8	—	—	—	—
12	1	"	—	Vll	—	—

Course	S	Lat SK	Lat Ok	Long SK	Chas	Bearings & Distances
177 <sup>th</sup>	31	13° 24' S	13° 22' S	12° 19' E	13° 18' E	Long P. Little Fish Bay N. N. 112°
1	1	"	h. S	Vll	1. Be	PM.
2	1	5	h. S	Vll	1. Be	PM.
3	1	"	h. S	Vll	1. Be	PM.
4	2	"	S. S	Sh	1. e	Employed as requisite
5	2	"	S. S	Sh	1. e	& Lashed.
6	2	"	S. S	Sh	1. e	& Lashed.
7	2	8	Vll	Vll	3. —	5-10. Mustard at Quarters.
8	3	4	S. S	Vll	3. —	& Lashed.
9	3	"	h. S	Vll	3. —	& Lashed.
10	3	"	h. S	Vll	3. —	& Lashed.
11	1	"	h. S	Vll	3. —	& Lashed.
12	1	"	h. S	Vll	3. —	8-45. In Bay also & S. jib.

#	W	10 <sup>th</sup>	Course	Winds	Weather	Remarks Saturday 13 <sup>th</sup>
1	1	"	h. S	Vll	1. oc	AM.
2	1	"	h. S	Cal	0.	AM.
3	1	5	h. S	h. S	1. —	4. 35 Lashed.
4	1	5	h. S	h. S	1. —	4. 35 Lashed.
5	1	6	h. S	h. S	1. —	4. 35 Lashed.
6	1	4	h. S	h. S	1. —	4. 35 Lashed.
7	1	2	h. S	h. S	1. —	4. 35 Lashed.
8	1	2	h. S	h. S	1. —	4. 35 Lashed.
9	1	5	h. S	h. S	1. —	4. 35 Lashed.
10	2	"	h. S	h. S	1. —	4. 35 Lashed.
11	2	"	h. S	h. S	1. —	4. 35 Lashed.
12	1	"	h. S	h. S	1. —	4. 35 Lashed.

Course	S	Lat SK	Lat Ok	Long SK	Chas	Bearings & Distances
167 <sup>th</sup>	24	13° 40' S	13° 35' S	10° 13' E	11° 56' E	Little Fish Bay N. N. 104°
1	1	"	S. S	Sh	2. be	PM.
2	1	5	S. S	Sh	2. be	PM.
3	1	5	S. S	Sh	2. be	PM.
4	2	"	h. S	h. S	1. —	Employed as requisite
5	2	6	h. S	h. S	1. —	Employed as requisite
6	2	"	h. S	h. S	1. —	5-10 Mustard at Quarters.
7	2	"	h. S	h. S	1. —	Examined Bay setting of studs
8	2	"	h. S	h. S	1. —	Examined Bay setting of studs
9	2	"	h. S	h. S	1. —	Examined Bay setting of studs
10	2	5	h. S	h. S	1. —	Examined Bay setting of studs
11	2	5	h. S	h. S	1. —	Examined Bay setting of studs
12	2	5	h. S	h. S	1. —	Examined Bay setting of studs

St. M. S. Hosp. Pomethues At Sea.

#	W	Vol	Course	Winds	Weather	Remarks
1	2	.	h <sup>1</sup> /S	Wh	3 Be	M. 10. the land. 9. 30 Mustered by divisions & Pursued Home Service 11. 30 Lacked.
2	2	8				
3	2	6				
4	2	6				
5	1	5				
6	2	.				
7	2	.				
8	2	.	h <sup>1</sup> /S		2	
9	2	.				
10	1	5				
11	1	5	h <sup>1</sup> /S			
12	1	5	h <sup>1</sup> /S			

Course	S	Lat S <sup>h</sup>	Lat W <sup>h</sup>	Long S <sup>h</sup>	Obs	Remarks & Distances
South	19'	13° 56'	13° 49'	12° 38'	11° 55'	Little Red Bay 18° 25'
1	2	5	W <sup>1</sup> /S	Wh	2 Be	P.M. 5. 10 Mustered at Quarters 11. 15 Obs? the land distant 5 or 6 miles. 11. 50 Lacked.
2	2	5	W <sup>1</sup> /S			
3	2	5				
4	2	5	W <sup>1</sup> /S			
5	2	.				
6	3	.				
7	2	5				
8	2	5	W <sup>1</sup> /S	Wh <sup>1</sup> /S	3	
9	3	.				
10	3	.				
11	4	.	W <sup>1</sup> /S	Wh	4	
12	4	1	South			

#	W	Vol	Course	Winds	Weather	Remarks
1	3	5	W <sup>1</sup> /S	Wh	3 Be	M. 1 to Hoysals & Flying jib. 3. Lacked 4. Lacked Obs? the land. 4. Mustered at Quarters. Sailed a division of Cuttup Men.
2	3	.				
3	2	5				
4	3	.	h <sup>1</sup> /S			
5	2	.	W <sup>1</sup> /S			
6	2	5				
7	2	5				
8	2	5	W <sup>1</sup> /S		2	
9	1	6				
10	2	.				
11	1	.	W <sup>1</sup> /S		3	
12	2	.	South	Wh <sup>1</sup> /S	3	

Course	S	Lat S <sup>h</sup>	Lat W <sup>h</sup>	Long S <sup>h</sup>	Obs	Remarks & Distances
139° 8'	22'	14° 19'	14° 6'	12° 25'	12° 18'	Little Red Bay 12° 30' to 67'
1	2	5	S <sup>1</sup> /S	Wh	3 Be	P.M. 2. 30 Shifted jib 3. Lacked. 5. 10 Mustered at Quarters. Sailed Hoys sending Hoysals & do up & down hooying & pulling the sails 7. 30 Lacked.
2	2	2				
3	2	3				
4	2	6	h <sup>1</sup> /S			
5	3	.				
6	1	.				
7	2	8	S <sup>1</sup> /S			
8	1	5	W <sup>1</sup> /S	Wh <sup>1</sup> /S	3 Be	
9	3	5	W <sup>1</sup> /S			
10	3	.				
11	3	.				
12	2	5				



H. M. S. Hoop. Prothonotary At Sea.

#	H	10th	Courses	Winds	Weather	Remarks	Sep. 18th 1841
1	2	5	W. S. S.	W	2. oc	A.M.	
2	2	.	W. S.				
3	2	.	W. S.				4. 15. Noon
4	2	5					Sayd. W. the land.
5	2	4					
6	3	4	S. S.	W	3. -		9. Mustered at Quarters.
7	3	5	W. S. S.				
8	2	.					
9	3	5	W. S.	W			Received a division of Cutlop Men
10	3	2	W. S.				
11	1	5					10. 30 Lashed.
12	2	.	W. S.	W	3. oc		12. Lashed.

Courses	S	Lat S	Lat W	Long S	Chas.	Bearings & Distances
13.0.0	26	14° 30' S	14° 28' S	72.5	11° 55' S	Little Fish Bay 118.8 46'

1	3	5	S. S. S.	W	3. oc	P.M.	
2	3	5	S. S.				
3	3	5					Emp. logd as requested
4	4	.	S. S.	W			3. 30. Carried away W. Top. Log. at
5	3	.					Shut. Splice 3' at the Sail
6	2	5					
7	2	5	W. S.				5. 10. Mustered at Quarters.
8	2	5	W. S.				Received at Cutlop. dull
9	3	5	W. S.	W	4. oc		7. Lashed in Log. also 1 S. jib.
10	3	5					
11	3	5					
12	3	5	W. S. S.				

#	H	10th	Courses	Winds	Weather	Remarks	Wednesday 19th
1	4	5	W. S. S.	W	5. veg	A.M.	
2	5	0					1. 30. In Top. fall sails.
3	4	5					4. Lashed 7. Let Top. fall sails.
4	4	.					1. 45. W. the land.
5	5	.	W. S.	W	4. -		
6	3	.					
7	2	5					9. Mustered at Quarters.
8	2	.	W.	W	1. -		Received a division of Cutlop. men
9	1	5					
10	1	.	W.				
11	1	.					
12	1	5	W. S.		1. c		

Courses	S	Lat S	Lat W	Long S	Chas.	Bearings & Distances
19.0.0	22'	14° 56' S	14° 47' S	11° 55' S	11° 45' S	Little Fish Bay. 139.8 34'

1	2	.	W. S.	W	2. clm	P.M.	
2	2	2					1. 30. W. Log. also 1 S. jib.
3	3	.					
4	4	.	S. S.		3. -		Emp. logd as requested
5	3	.					
6	2	5					5. 10. Mustered at Quarters.
7	2	.	S. S.				Received shifting W. Top. sail.
8	1	.	S. S. S.	W	1. clm		
9		.					
10		5	W. S.	W	0.		8. 15. Noon in Log. also 1 S. jib.
11		.					
12		.					





H. M. S. Hoop Promethus At Sea.

#	H	10 <sup>th</sup>	Course	Wind	Weather	Remarks Sep. 22 <sup>nd</sup> 1857.
1	2	5	N 8° E	West	2. c.	A.M. 4 to 10 Mudd & sails & trimmed 5 to 10 Land in sight 9. Mustered at Quarters. Received a division of Cattle Men. 11 Men set 8 <sup>th</sup> Mudd & sails & 100 Lysail.
2	2	4				
3	1	5				
4	1	4				
5						
6				Calm	0. Be	
7						
8						
9						
10						
11						
12	1		N 8° E	West	2. —	

Course	8	Lat 5 <sup>th</sup>	Lat Obs	Long 5 <sup>th</sup>	Obs	Bearing & Distance
N 13° E	45'	14° 7' S	14° 8' S	12° 5' E	12° 5' E	Cape St. Mary N 32° E 55'
1	2	5	N 8° E	N 8°	2. Be	P.M. 5 to 10 Mustered at Quarters. Received small amount of Squared goods in Lysails.
2	2	5				
3	2	8				
4	3	5				
5	3	5				
6	3	5				
7	2	5		West	3. —	
8	2	5				
9	3	4				
10	3	4				
11	2	2				
12	2	2				

#	H	10 <sup>th</sup>	Course	Wind	Weather	Remarks Tue day 23 <sup>rd</sup>
1	2	4	N 8° E	South	2. Be	A.M. 12. 15- to 10 Mudd & sails & trimmed 5 to 10 Land in sight 9. Mustered at Quarters. Received 100 most Quarters. & a division of Cattle Men.
2	2	5				
3	2	4				
4	1	5				
5	1	5				
6	2	4				
7	1	5				
8	1	5	N 8° E		2. oc.	
9	1	5				
10	1	5				
11	2	4				
12	2	4				

Course	8	Lat 5 <sup>th</sup>	Lat Obs	Long 5 <sup>th</sup>	Obs	Bearing & Distance
N 19° E	58'	13° 15' S	13° 13' S	12° 19' E	12° 26' E	Salinas R. N 55° E 35'
1	2	4	N 8° E	N 8°	2. Be	P.M. 5 to 10 Mustered at Quarters. Received 100 most Quarters.
2	2	4				
3	2	2				
4	2	5				
5	2	8		West	3. Be	
6	3	4				
7	3	4				
8	3	4				
9	2	5	N 8° E		3. oc.	
10	3	5	N 8° E			
11	3	4				
12	4	4			4. c.	

St. M. St. Hoop. Promethus. At Sea.

#	R	Vol	Courses	Winds	Weather	Remarks
1	4	"	A 8. S	N W	4. c	Atk.
2	3	3				
3	2	2				2 Linnel in Top of all sails
4	2	"				Koyals & Spib. jib.
5	2	2	8 1/2		3. cm	Sayd. Obs? the land set 2. g
6	2	"				sails Koyals & Spib.
7	1	8				g. Mustard at quarters
8	1	5				Decreed quarters deck quarters
9	1	"			oe.	
10	1	"				
11	1	5				
12	1	"	18	N W	2	11.30 Linnel & Stud of sail & Linnel

Course	S	Lat	St	Lat	Obs	Long	St	Obs	Bearing	Distance
A 33. 8	65	12° 33'	S	12° 18'	S	13° 08'	S	13° 2' 8"	S. Philip de Benguela	15 1/2 8 1/2

#	R	Vol	Courses	Winds	Weather	Remarks
1	1	8	8 1/2	N W	1. c	P.M.
2	1	5				
3	1	8				1.30 Linnel.
4	2	"		N W		5.10 Mustard at quarters
5	2	5				Decreed at Cuttaps deck
6	2	"	1 1/2 h		2. Beem	5.30 S. Philip's Bound 18. 1
7	2	5	1 1/2 h			12. a 13 miles to Stud of sails
8	2	5	1 1/2 h			6.10 to Koyals & Spib
9	2	2	1 1/2 h		3. oe	of Lacked in Top of all sails
10	2	2	1 1/2 h	N W		Stud of Top of sail & Store to.
11	2	8				
12	2	"				

#	R	Vol	Courses	Winds	Weather	Remarks
1		8	Woe to	N W	3. oe	Atk.
2		8	Head			
3		8				4.10 Woe to Sarsail & Key sail
4		8	A 1/2 h			Sayd. Land in sight
5	1	"	18	N W	2. cm	6.45 Made all plain sail
6	2	"				Obs? a sail A 1/2 h Lacked in
7	2	5				Chase of Mustard at quarters
8	1	"	A h			Decreed a Gun Crew.
9	3	"				10 Lacked set Mizzen
10	2	5	18 1/2			
11	2	6				
12	2	"	18 1/2			

Course	S	Lat	St	Lat	Obs	Long	St	Obs	Bearing	Distance
W 1/2	10	12° 35'	S	12° 35'	S	13° 28'	S	12° 57' 8"	S. Philip de Benguela East	16 1/2 2 1/2

#	R	Vol	Courses	Winds	Weather	Remarks
1	2	8	18 1/2	N W	3. c	P.M.
2	3	"	8 1/2			
3	4	"				1 Linnel set Mast & Stud of sails
4	4	8				Obs? the Pinnace
5	4	8				Deployed Making & Mending clothes
6	3	"			4. Be	5.10 Mustard at quarters 7.30 Pinnace
7	Running in for					Came alongside to all Stud of sail
8	Benguela Bay					1.45 Mustard sail & came to in
9					2. c	Benguela Bay with Mustard secured
10						to 50 fms Stud of sails.
11						
12						

H. M. S. Hoop. Promethium. At sea.

#	W	10 <sup>th</sup>	Course	Winds	Weather	Remarks Sep <sup>r</sup> 26 <sup>th</sup> 1857.
1				Calm	b. c	Alm.
2						
3						
4						
5						9. Mustered at quarters
6						
7						
8				—	—	
9						Emp <sup>d</sup> as most requisite
10						
11						
12				Vble	1. bc	

Course	Lat S <sup>th</sup>	Lat N <sup>th</sup>	Long S <sup>th</sup>	Wind	Beaufort & Distance
--------	---------------------	---------------------	----------------------	------	---------------------

1				b. c	2. bc	p. m.
2						
3						
4	3			S. by W		
5	3			S. by W	Vble	
6	3	2			—	
7	4	2		S. by W		
8	4	0		S. by W	W. by N	
9	4	5			4 —	
10	4					
11	4					
12	3			—	—	

3. Sent Purman away in charge of deck crew.  
 5. Drilled under all plain sail.  
 5.15 Obs<sup>d</sup> a sail boat.  
 5.15 Mustered at quarters.  
 8.30 In Royals & Flying jib.

#	W	10 <sup>th</sup>	Course	Winds	Weather	Remarks Saturday 27 <sup>th</sup>
---	---	------------------	--------	-------	---------	-----------------------------------

1	3			b. c	W	3. bc	Alm.
2	3						
3	3						
4	2						
5	1						
6	2	2		W	Vble	2 —	
7	2						
8	2						
9	2						
10	1			b. c			
11	2						
12	2			S. by W			

5. Tacked. Obs<sup>d</sup> the land.  
 7. In Royals & Flying jib.  
 Employed as requisite.

Course	Lat S <sup>th</sup>	Lat N <sup>th</sup>	Long S <sup>th</sup>	Wind	Beaufort & Distance
--------	---------------------	---------------------	----------------------	------	---------------------

1864	43	12° 35' S	12° 35' S	12° 49' E	12° 45' E	Salina P. 139° 8' 23'	
1	2	3		S. by W	Vble	2. bc	p. m.
2	2	5		S. by W			
3	3	4					
4	3	5		S. by W			
5	4						
6	4	2		W	Vble	3 —	
7	4	5					
8	3	5		W			
9	3						
10	3	5		S. by W			
11	2	5					
12	3	2		—	—		

2 sail in sight  
 5.15 Mustered at quarters.  
 7.30 Tacked in Royals & Flying jib.  
 10. In Top Galt sails.

St. M<sup>o</sup> S<sup>t</sup> Hoop. Prometheus At Sea

H	B	W <sup>th</sup>	Course	Winds	Weather	Remarks
1	3	5	W S W	W <sup>o</sup> W	4. oc.	Atk.
2	3	5	W S W			4. 15. W oc.
3	3	5	W S W			Obs? the sand on the bow.
4	3	5	W S W			
5	1	5	W S W	W	2. oc.	8. 20. let 1/2 of sails Hoysals & 1/2 jib.
6	2	5	W S W			
7	1	5	W S W			9. 30. Mustered at Quarter.
8	1	5	W S W			
9	4	5	W S W			
10	1	5	W S W	—	—	
11	2	5	W S W	W		1. Pass and down line.
12	5	5	W S W	W	3. —	

Course	S	Lat S <sup>t</sup>	Lat Obs	Long S <sup>t</sup>	Obs	Bearing & Distance
11. 1/2	29	13. 3' S		12. 31 E		True Rocks 153. E 18'

1	2	8	W S W	W S W	3. oc.	P.M.
2	2	8	W S W			
3	2	8	W S W			
4	2	8	W S W			5. 10. Mustered at Quarter.
5	4	8	W S W	—	—	
6	4	8	W S W	—	—	6. Landed
7	2	8	W S W	W S W	— oc.	7. Braided round on 1 <sup>st</sup> Deck in Hoysals & 1/2 jib
8	3	2	W S W			8. In Top Galt sails.
9	3	2	W S W			11. Up & down & down to.
10	3	2	W S W			
11	3	2	W S W			
12			W S W	W	—	

H	B	W <sup>th</sup>	Course	Winds	Weather	Remarks
1			W S W	W	3. Be	Atk.
2			W S W			
3			W S W			6. 30. Landed & made sail.
4			W S W			9. Mustered at Quarter let start Mudd & sail
5			W S W	—	2. c.	Received a division of Cutty.
6			W S W	—		me
7			W S W			
8			W S W			
9			W S W			
10			W S W			
11			W S W			
12			W S W	—	3. Be	Emp. boyed as requisite

Course	S	Lat S <sup>t</sup>	Lat Obs	Long S <sup>t</sup>	Obs	Bearing & Distance
			13. 21' S			Cape S <sup>t</sup> Mary 153. E 18'

1			W S W	W	4. Be	P.M.
2			W S W			
3			W S W			3. In all studdel & sails braided up
4			W S W			5. 30. The studdel sail & came to with 1/2 in 11 fms ahead to 3/4.
5			W S W	W	3. —	
6			W S W			
7			W S W			
8			W S W			
9			W S W			
10			W S W			
11			W S W			
12			W S W	W	5. Be	Out Mast Riddle Box Boat.

H. M. S. Hoop. Pomeroon Elephant Bay.

Date	Winds	Weather	Remarks Sept. 1861.
Tuesday 20 <sup>th</sup>	Calm	S. Be	Attn.
	Bust	S. —	Attn. Remained at General quarters firing at a target. Landed small gun & Mammes Remained S. firing at a target.
	Calm	S. —	

Wednesday 1 <sup>st</sup>	Calm	S. Be.	Attn.
	Bust	S. Be	Attn. In Paddle box boat. 9 Muzzled at quarters. Hoisted under all plain sail set P. studd <sup>g</sup> sails In studd <sup>g</sup> sails S. to studdard sail & came to off anchor in 5 fms under to 20 fms. Muzzled at quarters.
	—	2 —	

H	To	Vol.	Courses	Winds	Weather	Remarks Oct. 1 <sup>st</sup> to 1861.
1						Attn.
2						
3						
4						9. to Muzzled at quarters
5						Made all plain sail Hoisted & filled on Port Lark.
6						
7						
8						
9	1	4	Attn	Attn	2. e	Remained a division of Cuttaps men.
10	2	"	Attn	—	—	
11	2	"	Attn	—	—	
12	2	"	Attn	—	—	

Come	S	Lat S <sup>th</sup>	Lat W <sup>th</sup>	Long S <sup>th</sup>	Obs	Bearing & Distance
			12° 58'			South P. South Bay 12 6'
1	1	5	Attn	Attn	1. Be.	
2	2	5				Attn.
3	2	4	Attn			2. Lacked
4	1	4				
5	1	4				Employed making & mending clothes
6	1	4	Attn	Attn	2. Be	
7	2	2				5. to Muzzled at quarters. Lacked
8	2	5	Attn			
9	2	5				Remained at Cuttaps still
10	2	5				
11	2	4				
12	1	5	Attn	—	—	S. to Hoop also 1 1/2 pts.



H. No. 1<sup>st</sup> Hoop. Promettens At Sea.

#	1 <sup>st</sup>	2 <sup>nd</sup>	Course	Winds	Weather	Remarks
1	1	"	N.W.	V. Hk	1. Bc	Atk.
2	"	5				to Log and some job.
3	"	5				5. to Wm.
4	"	5	N.W.	Caln	0. Bc	Say! Oh? the land.
5	"	5				
6	"	5				
7	"	5				
8	"	5				Remind of General Quarter
9	"	5	South			
10	2	"	W.			Artificer rationally employed.
11	2	"				
12	2	"		W.	2. oc	

Course	Lat	Long	Lat	Long	Chas	Bearing & Distance
N.W.	187	12.55.1	12.55.1	12.40.8	12.57.8	Swai Rocks N. 8. 20 Miles.
1	2	"	South	W. Hk	2. oc	P.H.
2	3	"	W. Hk			
3	3	5				
4	3	5		W. Hk	1. Bc	5. to Mustard at Quarters.
5	Making up for					
6	Camanche Bay					6. Shortened sail & came to
7						with stream in Camanche Bay
8						bound to 40 fms.
9						2. miled mile.
10						
11						
12						

#	1 <sup>st</sup>	2 <sup>nd</sup>	Course	Winds	Weather	Remarks
1				Caln	0. Bc	Atk.
2						
3						
4						
5						Emp. boyed scraping charts
6						& books & as requisite
7						
8						
9						
10						Artificer rationally employed.
11						
12						

Course	Lat	Long	Lat	Long	Chas	Bearing & Distance
1						
2	1	"	N.W.	West	3. Bc	P.H.
3	3	5				1. to Made all plan - sail & rigging
4	4	"	W. Hk		4. oc	& fitted on Port Lark.
5	Making up for					
6	Elephant Bay.					3. Lacked 4. to Lacked
7						5. to Mustard at Quarters.
8						7. to Shortened sail & came to
9						in Elephant Bay with stream.
10						
11						
12						

H. M. S. Hoop. Prometheus Elephant Bag

Date	Wind	Weather	Remarks
Monday 6 <sup>th</sup>	Calm	S. Bc	AM.
	Bust	S -	PM.
			9. to New tend by Division.
			Performed Division service.
	Calm	S Bc	
	Calm	S Bc	AM.
Monday 7 <sup>th</sup>			
	Bust	S. Bc	PM.
			Employed blacking heads & tarring in Main Top mast rigging.
	Calm	S. C	
			Employed staying Top mast & setting up Main Top mast rigging.

#	Course	Wind	Weather	Remarks
1		Calm	S. C	AM.
2				
3				
4				
5				
6			S. C	
7				Employed blacking heads & as requisite.
8				
9				
10				
11		Bust	S. Bc	
12				

Course	Lat S <sup>th</sup>	Lat W <sup>th</sup>	Long S <sup>th</sup>	Chs	Beams & Distance
1				Bust	S. Bc PM.
2					
3					3 Made sail to Top sails & rigging
4	2	5	A 8. S		Made all plain sail.
5	2	6	A 8. S		5. to New tend at Quarter set
6	2	5	A 8. S		4. to New tend at Quarter set
7	2	5			4. to New tend at Quarter set
8	4	5	A 1. S		to the down. Studed & sail carried
9	4	5	A 1. S		away. Fallock shown & layed out, in
10	3	8			W. 1/2 sail studed & sail & Royal.
11	3	8			
12	3	8			

No. No. 1. Hoop. Provisions. At Sea.

#	H	Vol	Course	Winds	Weather	Remarks Oct 8 <sup>th</sup> 1851.
1	3	6	N. E.	West	S. Bc	AM.
2	3	6	N. E.			
3	2	6				1. Landed bag of sand in sight
4	2	6				2. To Landed shifted over studding
5	2	6				sails set up. Luttock shrou
6	2	6	S. N. E.	—	—	set Mr. T. G. sail & Royal.
7	1	6				g. Mustered at Quarters
8	1	6	S. S. E.			Obs. 2 sail on die boom
9	2	5	South			
10	1	5	East			
11	3	5				
12	3	5	—	N. W.	—	Landed in Chace set down studding

Course	S	Lat S <sup>th</sup>	Lat Obs	Long S <sup>th</sup>	Chis	Bearing & Distance
N. E.	57	12° 52' S	12° 27' S	12° 59' E	12° 59' E	Cape St. Vras N. 148'

1	3	6	East	Sh	S. Bc	PM.
2	3	6				
3	1	6				2. 16. Provisions sent to L'Esperance
4	6	5	W. to			Here to in U. with 2 Mr King
5	6	5				'Round' emp. by ed. supplying
6	6	5	N. W.			'Round' with Coals.
7	6	5				
8	6	5				
9	1	5	N. E.	Sh	2. Cms.	5. 10. Mustered at Quarters.
10	1	5				
11	2	5				
12	2	2	—	—	—	g. 30. filled & parted Co

#	H	Vol	Course	Winds	Weather	Remarks Thursday 9 <sup>th</sup>
1	2	6	N. E.	Sh	2. Cms.	AM.
2	2	6				
3	2	6				
4	2	6				g. 30. Mustered at Quarters.
5	1	6				
6	1	6	—	South	—	Discovered a division of Lullap's men
7	1	6				
8	1	6				
9	1	6				
10	2	2				
11	2	6				Artificers sawing & employed.
12	2	6	—	N. W.	2. Bc	

Course	S	Lat S <sup>th</sup>	Lat Obs	Long S <sup>th</sup>	Chis	Bearing & Distance
North W.	33	11° 55' S	11° 54' S	13° 08' E	12° 58' E	Cape St. Vras N. 12° 115'

1	2	6	N. E.	N. W.	S. Bc	PM.
2	3	6				
3	4	6				1. set Top gell sails & L'Esperance
4	3	6				Employed Making & Mending clothes
5	3	6				
6	2	6				
7	3	6	—	—	— Bc	5. 10. Mustered at Quarters.
8	3	6				
9	3	6				
10	2	6				Discovered at Lullap's Hill.
11	2	6				
12	2	6	—	—	—	

H. M. S. Hoop. Perimeters. At sea.

#	H	Wt	Course	Winds	Weather	Remarks Oct <sup>br</sup> 10 <sup>th</sup> 1851
1	3	"	S. S. E.	West	3. Bc	A.M.
2	3	"				
3	2	5				
4	3	5				
5	2	5				Decided at General Quarters.
6	2	5		W. Str	2. cm	
7	2	5				
8	2	5				
9	1	8				Activities variously employed.
10	1	8				
11	1	8				
12	2	"			Beau	

Course	Lat S <sup>th</sup>	Lat N <sup>th</sup>	Long S <sup>th</sup>	Chro	Bearings & Distances
S. S. E.	18° 48' S	18° 39' S	12° 58' W	13° 5' W	Cape V. Bear N 26° E 42'

#	H	Wt	Course	Winds	Weather	Remarks
1	2	"	S. S. E.	W. S. W.	2. Bc	P.M.
2	2	4				
3	2	2				
4	2	4				
5	3	"				1. Let Port Head & sail Hoops & 2 jib. 5. Summed 5. to Mustard at Quarters.
6	3	"				
7	3	"				
8	3	"				
9	3	5	S. E.	Str	3. —	Decided small amount & Summed 11. 15 Summed.
10	3	5				
11	3	5				
12	3	5		West	— cm.	

#	H	Wt	Course	Winds	Weather	Remarks Saturday 11 <sup>th</sup> 1851
1	3	5	S. E.	West	3. cm	A.M.
2	3	5				
3	3	5				
4	4	5				
5	4	3				7. to the land. & Squ and yards.
6	3	3				
7	3	2				
8	3	2				
9	2	2	S. E.	S. S. W.	1. c	Employed as requisite
10	2	4				
11	2	5				
12	2	8			Beau	

Course	Lat S <sup>th</sup>	Lat N <sup>th</sup>	Long S <sup>th</sup>	Chro	Bearings & Distances
S. E.	9° 27' S	9° 11' S	12° 57' W	12° 58' W	Cape Lajos tas. N 36° E 32'

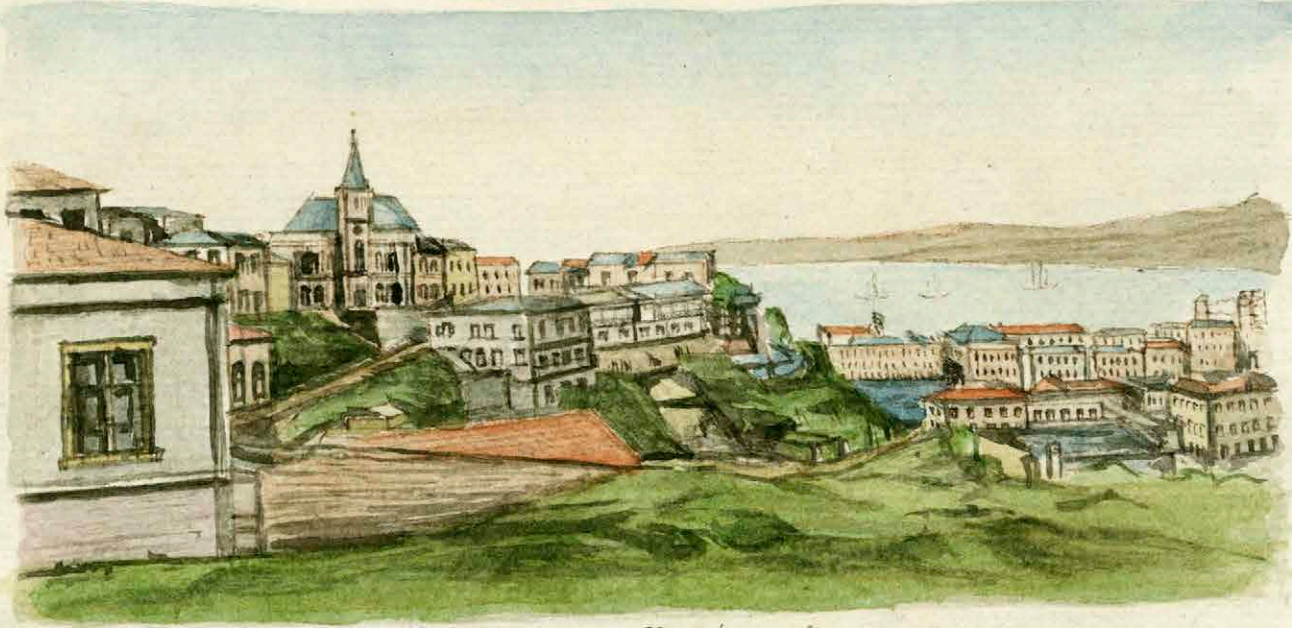
#	H	Wt	Course	Winds	Weather	Remarks
1						P.M.
2						
3						
4						
5						3. to let Head S. 1. Let Head & sail 5. to Mustard at Quarters shifted over down Head in 1st 1/2 W. S. E. 7. to let all stand & sail shipped Hoops did fire Proceeded on 2 <sup>nd</sup> step 9. 58 Mustard & fired sails 10. 30 Stopped & came to of 1/2 parallel boards in 8 fms ahead to 30 fms. Anchored. 11. 15
6						
7				West	4. —	
8						
9						Heavy in fms boards
10						
11						
12						



ASSUNCION - PARAGUAY.



LIMA.



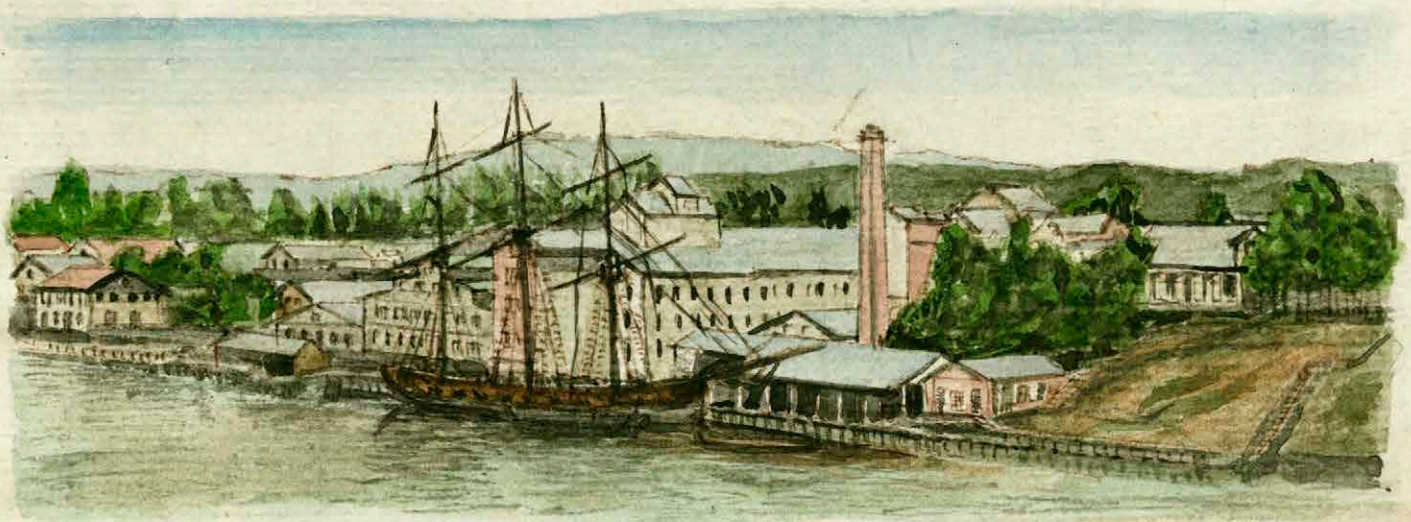
VALPARAISO. CERRO CONCEPCION.



MADEIRA.



PUERTO MONTT.



TEJA ISLAND.

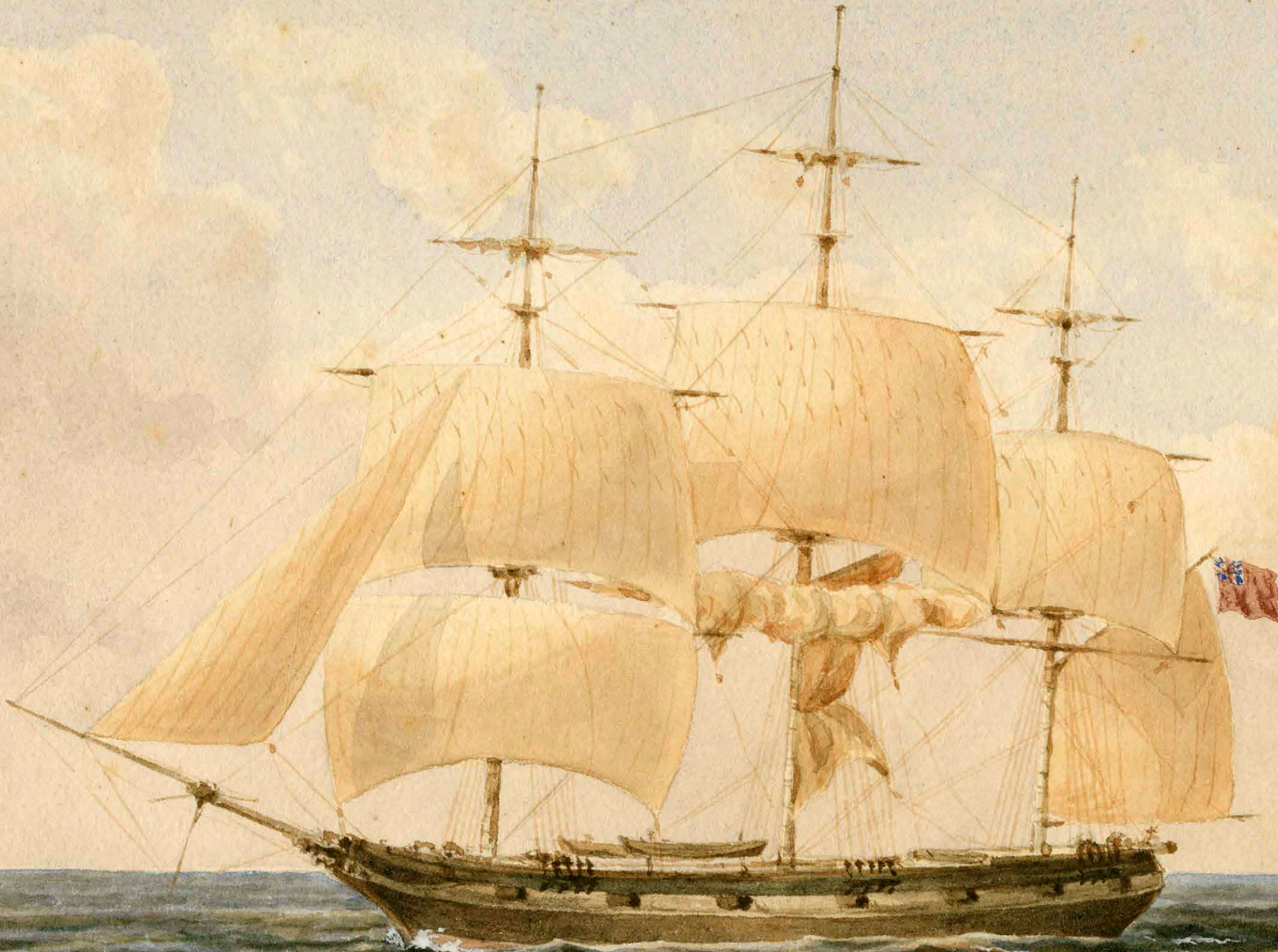


ESTACION DE MAGALLANES.



ESTACION DE MAGALLANES.





*Handwritten signature or mark in the bottom right corner.*

M581





TABLE MOUNTAIN, LION'S HEAD, AND DEVIL'S PEAK FROM TABLE BAY.



COSTA RICAN COAST.



LAS PALMAS.



ST. PIERRE MARTINIQUE.



MONTEGO BAY FROM HEADING HILL.



FORT. ANTON, JAMAICA.



ROSEAU.

M581





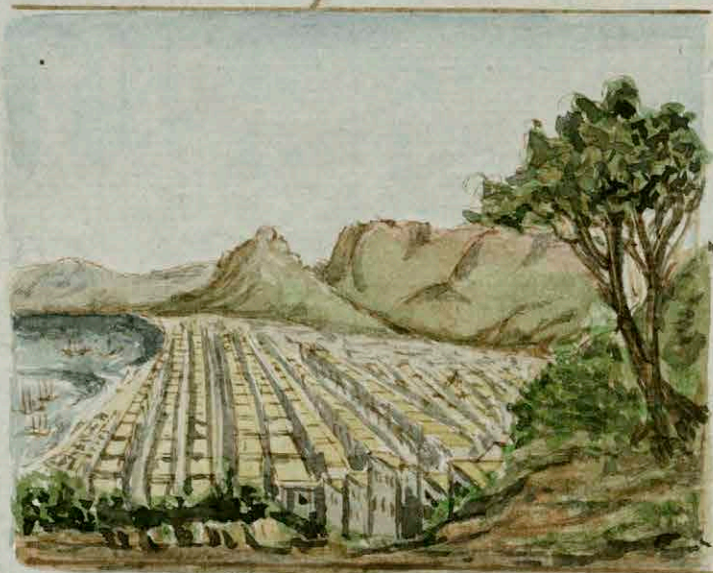
MONT SERRAT.



ST. THOMAS.



HAVANA



Cape Town.



HAVANA, FROM THE QUARRIES.



FREETOWN.

